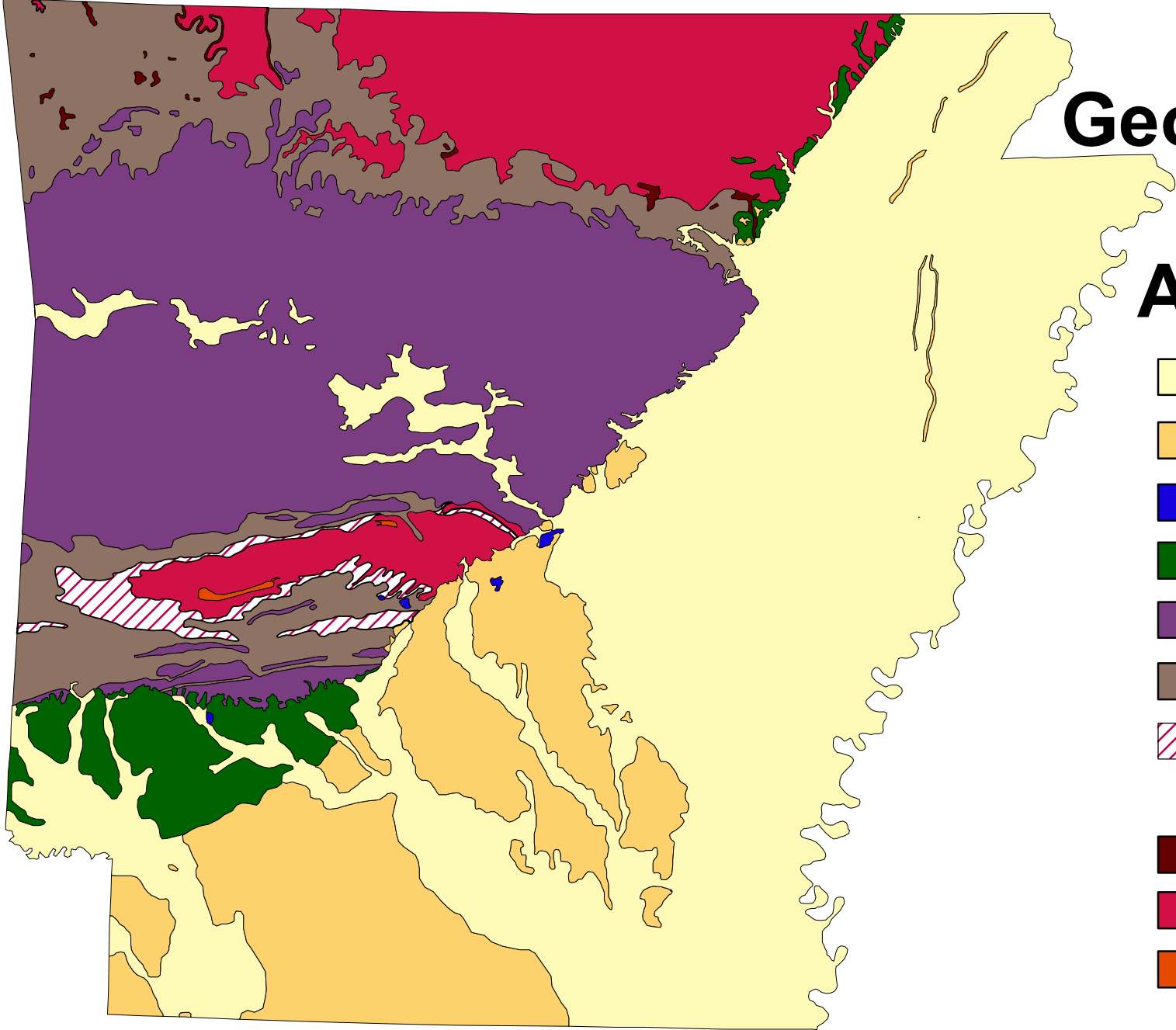


Geologic Map of Arkansas



-  Quaternary
-  Tertiary
-  Igneous
-  Cretaceous
-  Pennsylvanian
-  Mississippian
-  Silurian/Devonian
includes middle and upper
division of Mississippian
Arkansas Novaculite
-  Silurian/Devonian
-  Ordovician
-  Cambrian
includes portions of Lower
Ordovician Collier Shale

0 35 70 140 Miles