

D NORTH

SOUTH D'

D-1
Anschutz Corp.
L. Jones et al. No. 1
Sec. 32, T. 13N., R. 23W.

D-2
Seeco Inc.
Williams No. 1-30
Sec. 30, T. 12N., R. 23W.

D-3
Tenneco Oil Co.
R. Farris No. 1-18
Sec. 18, T. 11N., R. 23W.

D-4
Phillips Petroleum Co.
South Low Gap No. 1
Sec. 31, T. 11N., R. 23W.

D-5
Arkansas Louisiana Gas Co.
L. Woodward No. 1-18
Sec. 13, T. 10N., R. 24W.

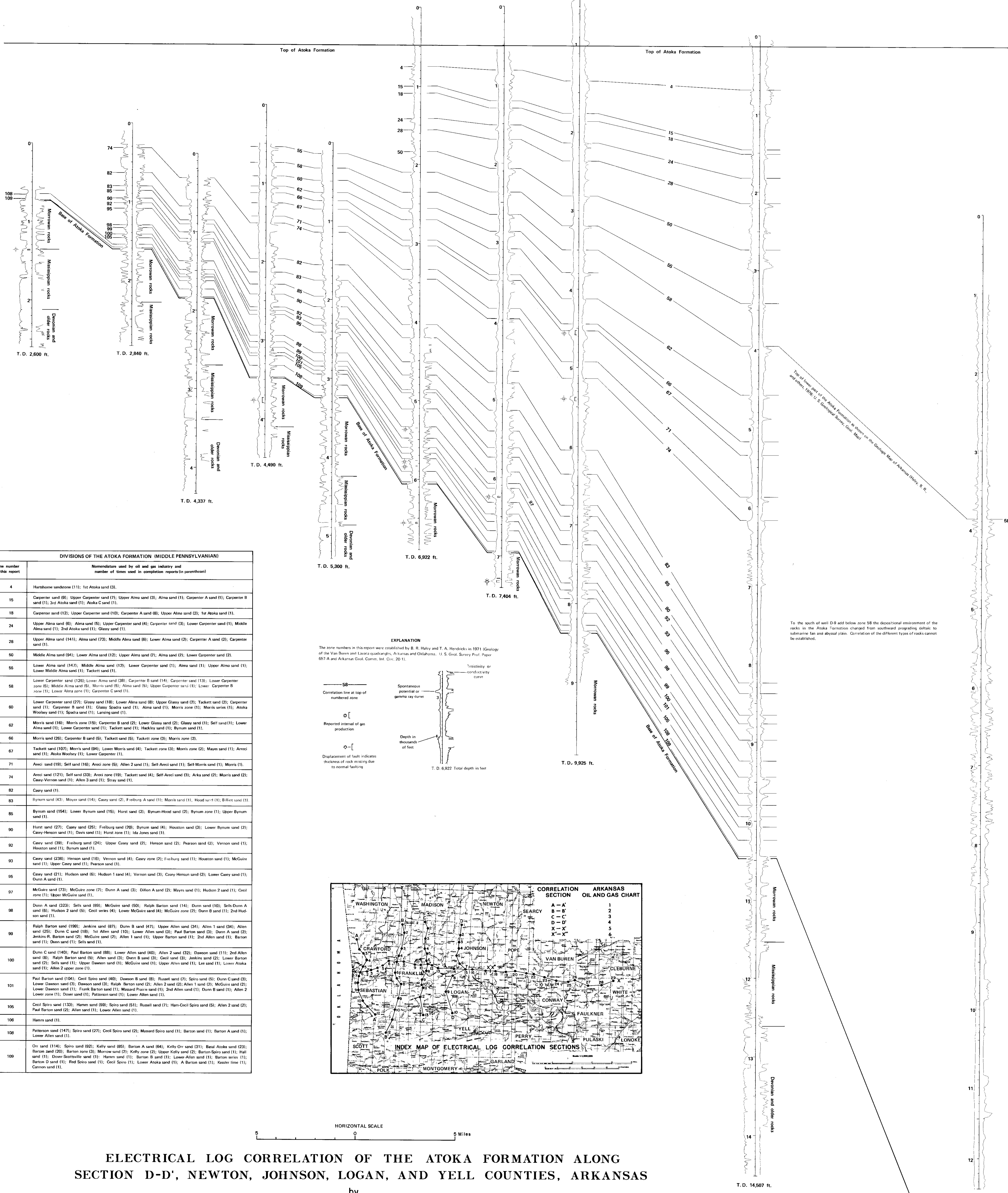
D-6
Diamond Shamrock Corp.
J. L. Zimpel No. 1
Sec. 5, T. 9N., R. 23W.

D-7
Sunray Oil Co.
T. Melton Unit No. 1
Sec. 23, T. 9N., R. 23W.

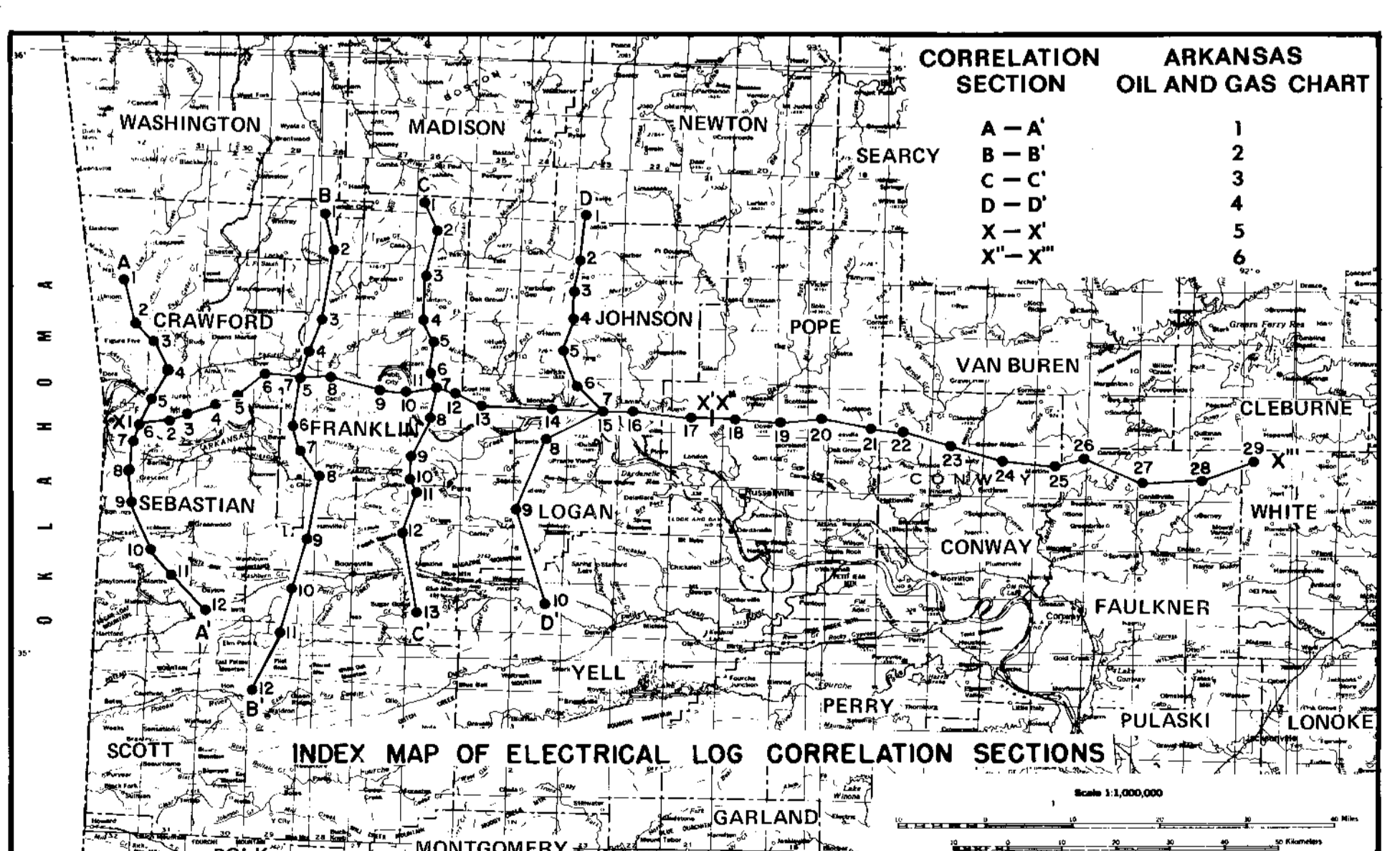
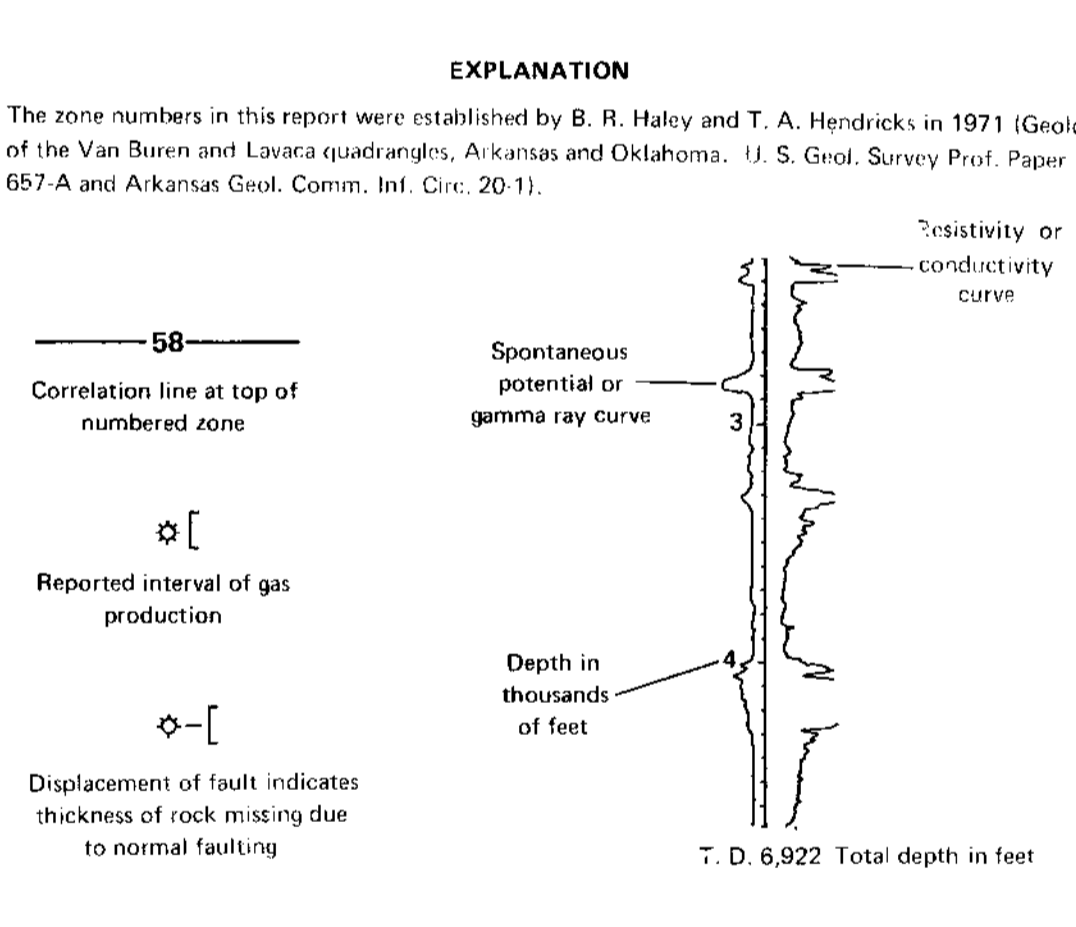
D-8
E. L. Cox
Lancaster Unit No. 1
Sec. 10, T. 8N., R. 23W.

D-9
Tenneco Oil Co.
Federal No. 1-19
Sec. 19, T. 7N., R. 23W.

D-10
Shell Oil Co.
C. M. Bettis No. 1
Sec. 14, T. 5N., R. 23W.



DIVISIONS OF THE ATOKA FORMATION (MIDDLE PENNSYLVANIAN)	
Zone number in this report	Nomenclature used by oil and gas industry and number of times used in completion reports (in parentheses)
4	Hartshorn sandstone (11); 1st Atoka sand (3).
15	Carpenter sand (6); Upper Carpenter sand (7); Upper Alma sand (3); Alma sand (1); Carpenter A sand (1); Carpenter B sand (1); 3rd Atoka sand (1); Atoka C sand (1).
18	Carpenter sand (12); Upper Carpenter sand (10); Carpenter A sand (8); Upper Alma sand (2); 1st Atoka sand (1).
24	Upper Alma sand (6); Alma sand (5); Upper Carpenter sand (4); Carpenter sand (3); Lower Carpenter sand (1); Middle Alma sand (1); 2nd Atoka sand (1); Glassy sand (1).
26	Upper Alma sand (14); Alma sand (7); Middle Alma sand (6); Lower Alma sand (2); Carpenter A sand (2); Carpenter sand (1).
50	Middle Alma sand (94); Lower Alma sand (12); Upper Alma sand (7); Alma sand (2); Lower Carpenter sand (2).
55	Lower Alma sand (14); Middle Alma sand (12); Lower Carpenter sand (1); Alma sand (1); Upper Alma sand (1); Lower Middle Alma sand (1); Tackett sand (1).
58	Lower Carpenter sand (126); Lower Alma sand (28); Carpenter B sand (14); Carpenter sand (13); Lower Carpenter zone (6); Middle Alma sand (5); Morris sand (5); Alma sand (5); Upper Carpenter sand (1); Lower Carpenter B zone (1); Lower Alma zone (1); Carpenter C sand (1).
60	Lower Carpenter sand (27); Glassy sand (18); Lower Alma sand (8); Upper Glassy sand (2); Tackett sand (2); Carpenter sand (1); Carpenter B sand (1); Glassy Sparta sand (1); Alma sand (1); Morris zone (1); Morris series (1); Atoka Woolsey sand (1); Sparta sand (1); Lansing sand (1).
62	Morris sand (16); Morris zone (15); Carpenter B sand (2); Lower Glassy sand (2); Glassy sand (1); Self sand (1); Lower Alma sand (1); Lower Carpenter sand (1); Tackett sand (1); Hackley sand (1); Bynum sand (1).
66	Morris sand (26); Carpenter B sand (5); Tackett sand (5); Tackett zone (3); Morris zone (2).
67	Tackett sand (107); Morris sand (94); Lower Morris sand (4); Tackett zone (3); Morris zone (2); Mayes sand (1); Arceci sand (1); Atoka Woolsey (1); Lower Carpenter (1).
71	Arceci sand (19); Self sand (16); Arceci zone (5); Allen 2 sand (1); Self Arceci sand (1); Self Morris sand (1); Morris (1).
74	Arceci sand (121); Self sand (33); Arceci zone (19); Tackett sand (4); Self Arceci sand (3); Arka sand (2); Morris sand (2); Casey Vernon sand (1); Allen 3 sand (1); Stray sand (1).
82	Casey sand (1).
83	Bynum sand (43); Moyer sand (14); Casey sand (2); Freiburg A sand (1); Morris sand (1); Hood sand (1); Billot sand (1).
85	Bynum sand (154); Lower Bynum sand (15); Hurst sand (2); Bynum-Hood sand (2); Bynum zone (1); Upper Bynum sand (1).
90	Hurst sand (27); Casey sand (25); Freiburg sand (20); Bynum sand (4); Houston sand (3); Lower Bynum sand (2); Casey-Henson sand (1); Davis sand (1); Hurst zone (1); Ma Jones sand (1).
92	Casey sand (39); Freiburg sand (24); Upper Casey sand (2); Henson sand (2); Pearson sand (2); Vernon sand (1); Houston sand (1); Bynum sand (1).
93	Casey sand (238); Henson sand (18); Vernon sand (4); Casey zone (2); Freiburg sand (1); Houston sand (1); McGuire sand (1); Upper Casey sand (1); Pearson sand (1).
95	Casey sand (21); Hudson sand (5); Hudson 1 sand (4); Vernon sand (3); Casey-Henson sand (2); Lower Casey sand (1); Dunn A sand (1).
97	McGuire sand (73); McGuire zone (7); Dunn A sand (3); Dillon A sand (2); Mayes sand (1); Hudson 2 sand (1); Cecil zone (1); Upper McGuire sand (1).
98	Dunn A sand (323); Sells sand (89); McGuire sand (50); Ralph Barton sand (14); Dunn sand (10); Sells Dunn A sand (5); Hudson 2 sand (5); Cecil sand (4); Lower McGuire sand (4); McGuire zone (2); Dunn B sand (1); 2nd Hudson sand (1).
99	Ralph Barton sand (190); Jenkins sand (87); Dunn B sand (47); Upper Allen sand (24); Allen 1 sand (34); Allen sand (25); Dunn C sand (18); 1st Allen sand (10); Lower Allen sand (3); Paul Barton sand (3); Dunn A sand (2); Jenkins R. Barton sand (2); McGuire sand (2); Allen 1 sand (1); Upper Barton sand (1); 2nd Allen sand (1); Barton sand (1); Dunn sand (1); Sells sand (1).
100	Dunn C sand (140); Paul Barton sand (88); Lower Allen sand (40); Allen 2 sand (32); Dawson sand (11); 2nd Allen sand (8); Ralph Barton sand (5); Allen sand (3); Cecil sand (3); Jenkins sand (2); Lower Barton sand (2); Sells sand (1); Upper Dawson sand (1); McGuire sand (1); Upper Allen sand (1); Lee sand (1); Lower Atoka sand (1); Allen 2 upper zone (1).
101	Paul Barton sand (104); Cecil Spiro sand (40); Dawson B sand (8); Russell sand (7); Spiro sand (5); Dunn C sand (3); Lower Dawson sand (3); Dawson sand (3); Ralph Barton sand (2); Allen 2 sand (2); Allen 1 sand (2); McGuire sand (2); Lower Dawson sand (1); Frank Barton sand (1); Massard Prairie sand (1); 2nd Allen sand (1); Dunn B sand (1); Allen 2 lower zone (1); Dover sand (1); Patterson sand (1); Lowe Allen sand (1).
105	Cecil Spiro sand (123); Hamm sand (59); Spiro sand (51); Russell sand (7); Hamm-Cecil Spiro sand (5); Allen 2 sand (2); Paul Barton sand (2); Allen sand (1); Lower Allen sand (1).
106	Hamm sand (1).
108	Patterson sand (147); Spiro sand (27); Cecil Spiro sand (2); Massard Spiro sand (1); Barton sand (1); Barton A sand (1); Lower Allen sand (1).
109	Orr sand (114); Spiro sand (62); Kelly sand (85); Barton A sand (64); Kelly Orr sand (31); Basal Atoka sand (23); Barton sand (20); Barton zone (2); Morrow sand (2); Kelly zone (2); Upper Kelly sand (2); Barton Spiro sand (1); Hill sand (1); Dover-Scottville sand (1); Hamm sand (1); Barton B sand (1); Lower Allen sand (1); Barton series (1); Barton D sand (1); Red Spiro sand (1); Cecil Spiro (1); Lower Atoka sand (1); A Barton sand (1); Kessler lime (1); Cannon sand (1).



ELECTRICAL LOG CORRELATION OF THE ATOKA FORMATION ALONG SECTION D-D', NEWTON, JOHNSON, LOGAN, AND YELL COUNTIES, ARKANSAS

by
Boyd R. Haley
U. S. Geological Survey
1982