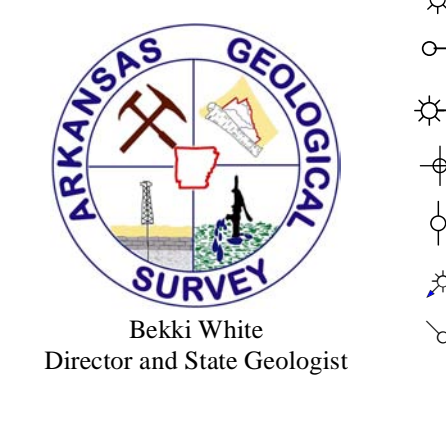


# Fayetteville Shale Gas Play, Johnson County



Arkansas Geological Survey  
Brett White  
Director and State Geologist

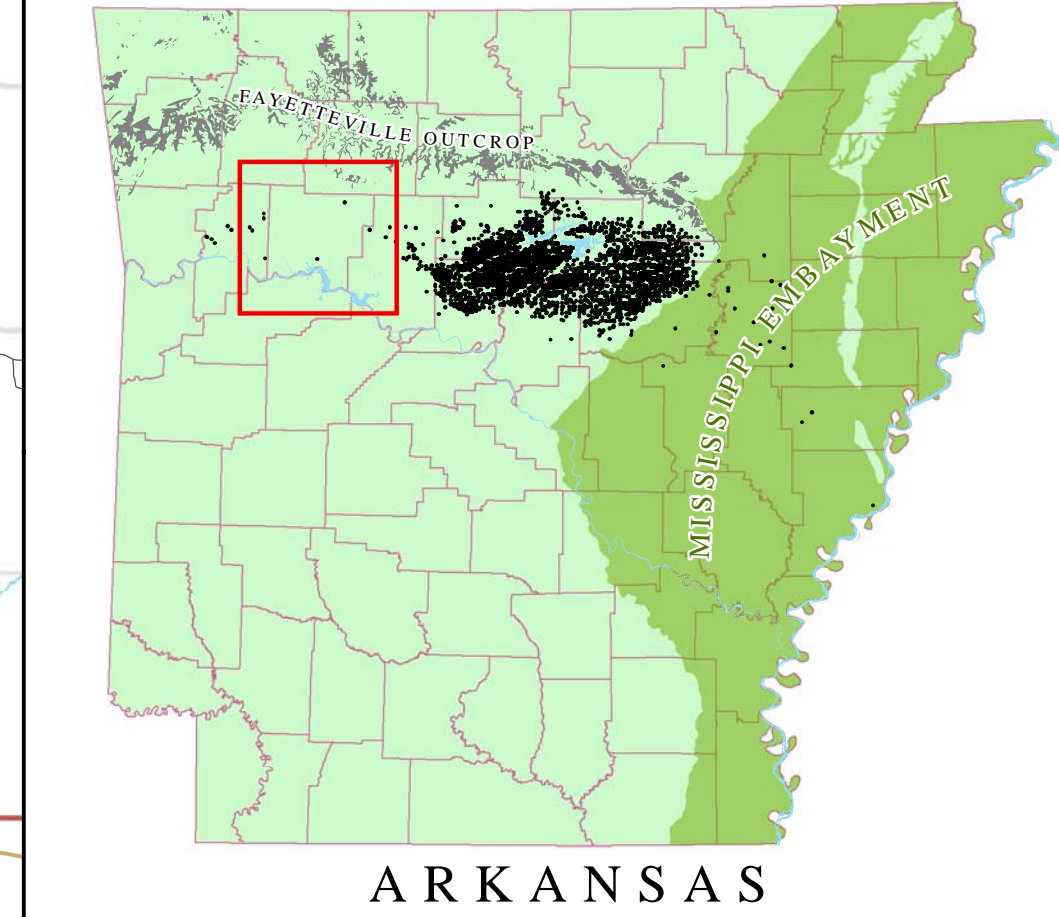
|  |  |                    |                        |
|--|--|--------------------|------------------------|
| ○ Permitted/Proposed Vertical Gas Well         | ● Fayetteville Shale                   | — Gas Pipeline     | ▭ County Boundary      |
| ○ Vertical Gas Well                            | ● Moorefield Shale                     | — Oil Pipeline     | ▭ City Limits          |
| ○ Permitted/Proposed Horizontal Gas Well       | ● Chattanooga Shale                    | — Product Pipeline | ▭ PLS Section          |
| ○ Plugged and/or Abandoned Gas Well            | ● Anoka Sandstones (conventional)      | — Interstate       | ▭ PLS Section          |
| ○ Shut-In Gas Well                             | ● Maroon Sandstones (conventional)     | — US Hwy           | ▭ Water body           |
| ○ Injection Well                               | ● Ashokke                              | — St Hwy           | ▭ Swamp                |
| ○ Proposed Injection Well, pending application | ● Boone                                | — Roads            | ▭ Fayetteville Outcrop |
|  | ● St. Peter                            |                    |                        |
|  | ● Batesville Sandstones (conventional) |                    |                        |
|  | ● Premer Chert                         |                    |                        |
|  | ● Rock                                 |                    |                        |

Well data as of 8 January 2016

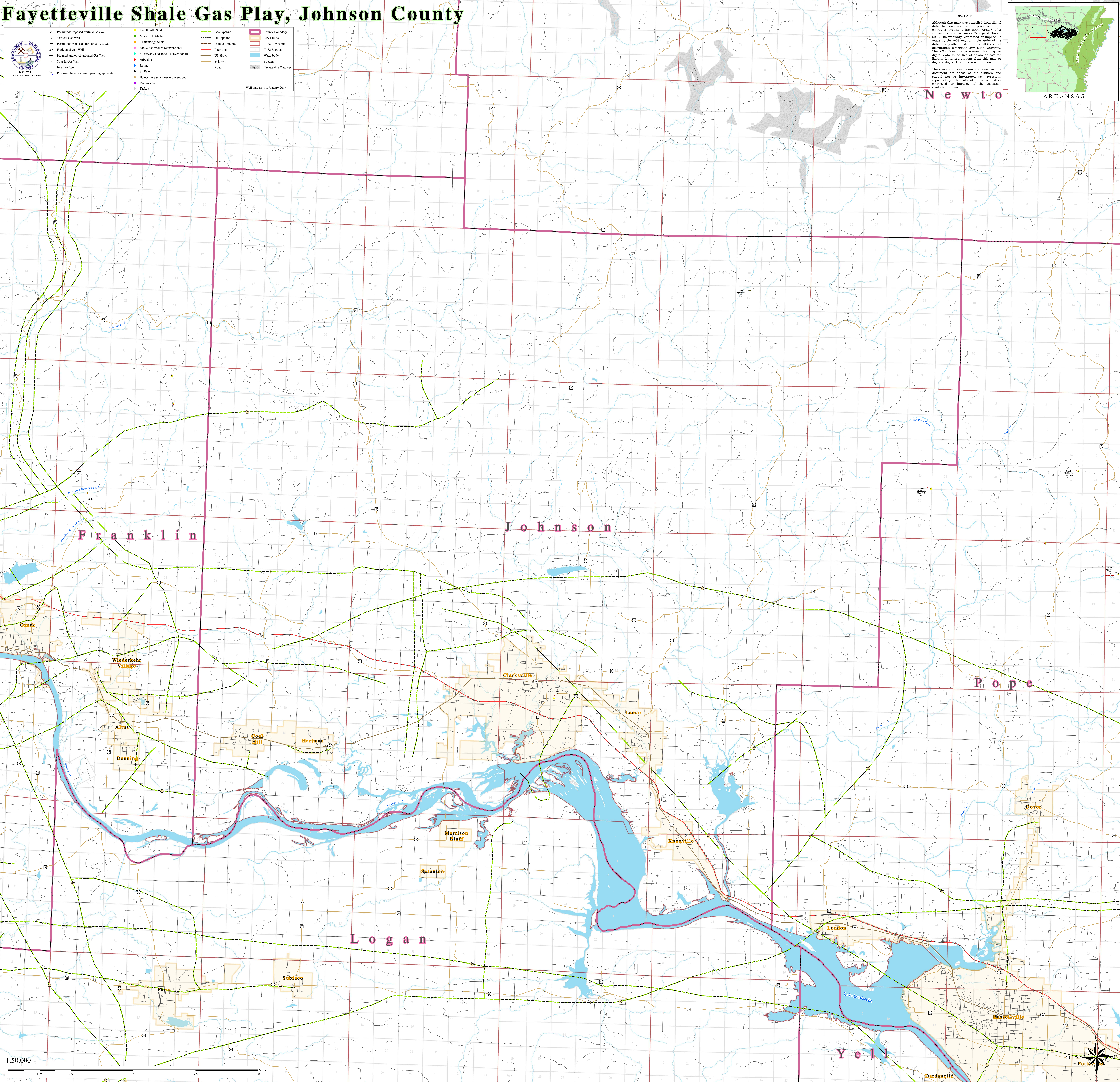
**DISCLAIMER**

Although this map was compiled from digital data that was successfully processed on a computer system using GIS software, the software of the Arkansas Geological Survey (AGS) or any other system, or shall the act of distribution constitute any such warranty. The AGS does not guarantee this map or digital data to be free of errors or assume liability for interpretations from this map or digital data, or decisions based thereon.

The views and conclusions contained in this document are those of the author and should not be interpreted as necessarily representing the official policies, either expressed or implied, of the Arkansas Geological Survey.



ARKANSAS



1:50,000

