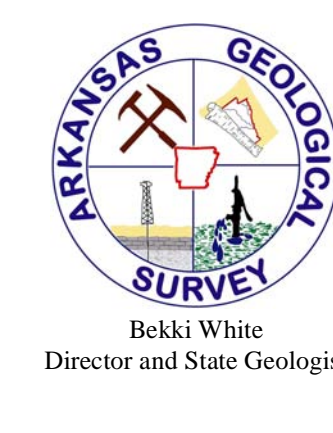


Fayetteville Shale Gas Play, Van Buren County



Arkansas Geological Survey
Brent W. White
Director and State Geologist

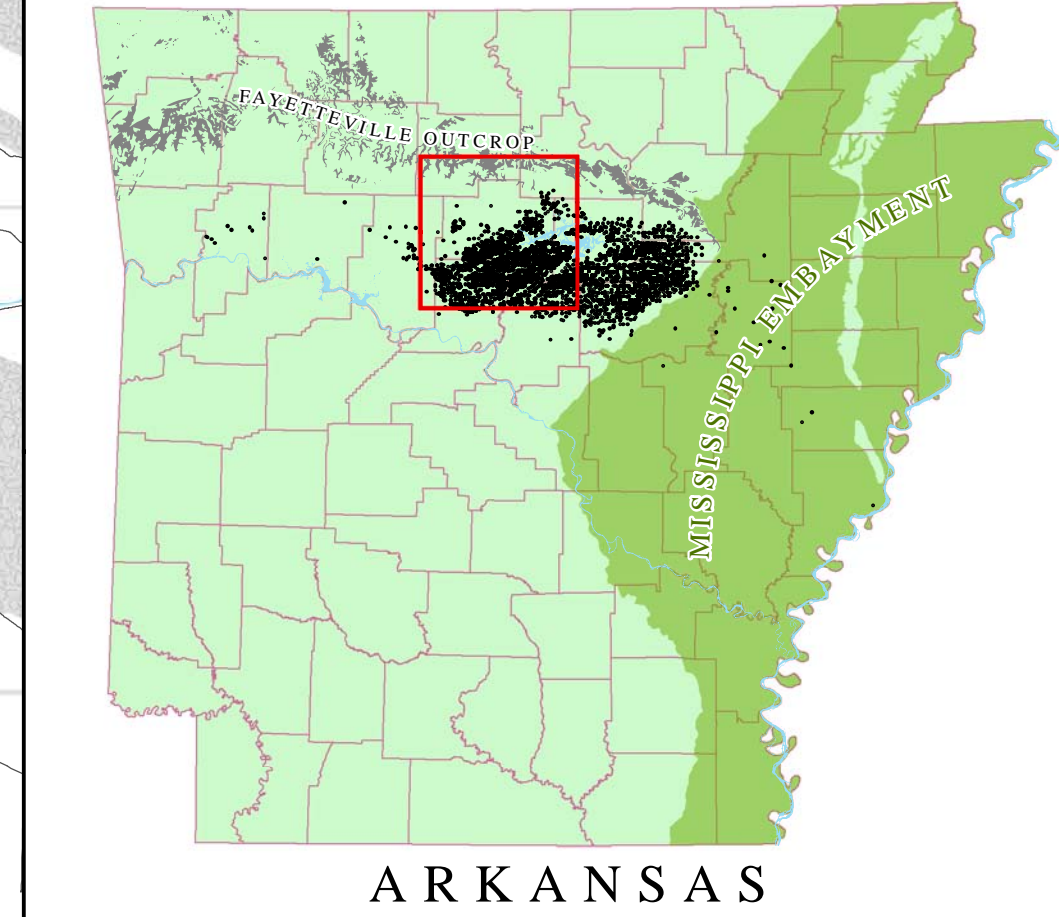
○ Permitted/Proposed Vertical Gas Well	● Fayetteville Shale	— Gas Pipeline	▭ County Boundary
○ Vertical Gas Well	● Moorefield Shale	— Oil Pipeline	▭ City Limits
○ Permitted/Proposed Horizontal Gas Well	● Chattanooga Shale	— Product Pipeline	▭ PLS Section
○ Plugged and/or Abandoned Gas Well	● Arkala Sandstones (conventional)	— Interstate	▭ PLS Section
○ Shut In Gas Well	● Maroon Sandstones (conventional)	— US Hwy	▭ Water body
○ Injection Well	● Ashbuckle	— St Hwy	▭ Stream
○ Proposed Injection Well, pending application	● Boone	— Road	▭ Fayetteville Outcrop
	● St. Peter		
	● Batesville Sandstones (conventional)		
	● Premier Chert		
	● Ticket		

Well data as of 8 January 2016

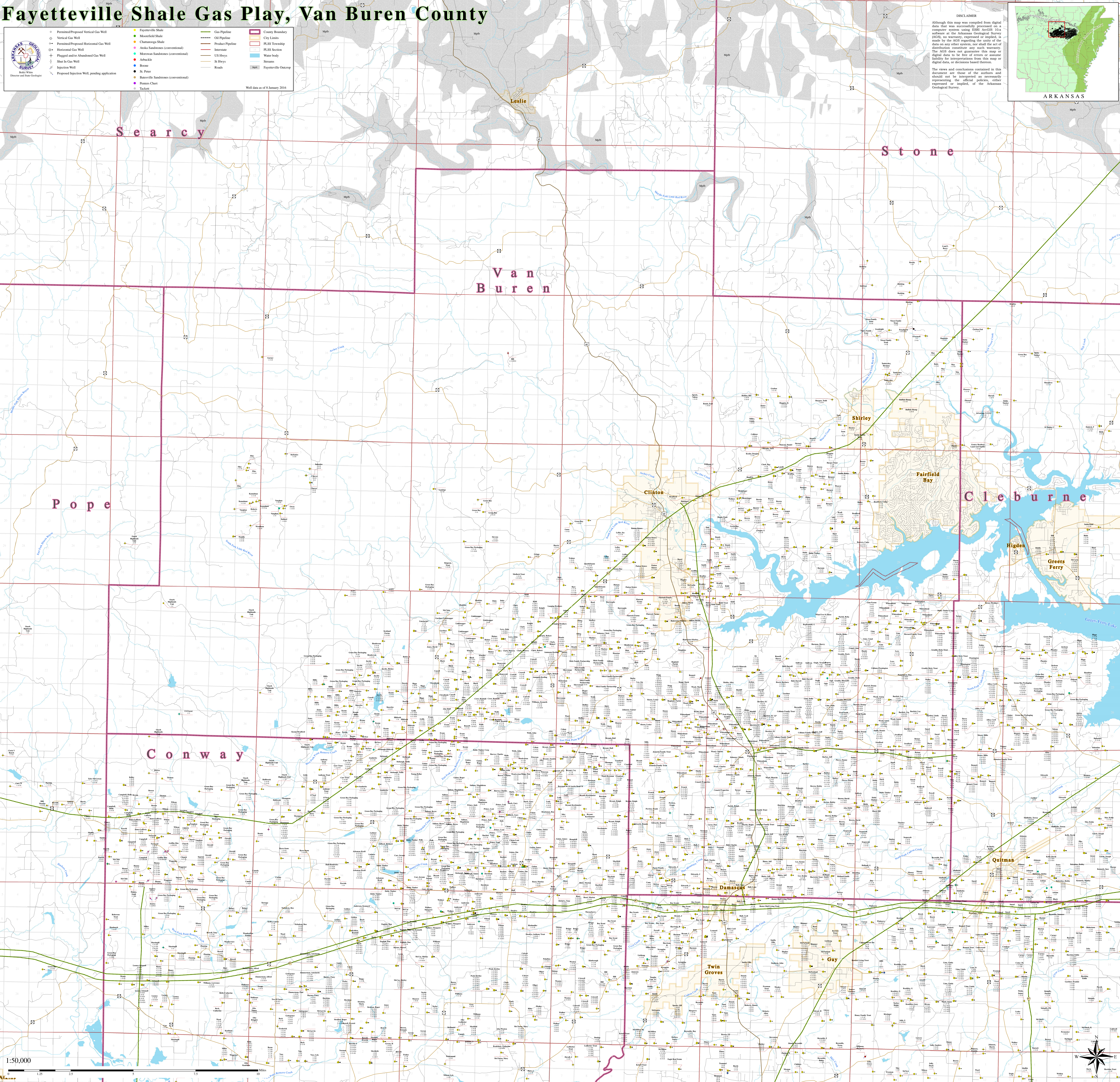
DISCLAIMER

Although this map was compiled from digital data that was successfully processed on a computer system using ESRI ArcGIS 10a software at the Arkansas Geological Survey (AGS), no warranty, expressed or implied, is made by the AGS regarding the utility of the data on any other system, nor shall the act of distribution constitute any such warranty. The AGS does not guarantee this map or digital data to be free of errors or assume liability for interpretations from this map or digital data, or decisions based thereon.

The views and conclusions contained in this document are those of the authors and should not be interpreted as necessarily representing the official position, either expressed or implied, of the Arkansas Geological Survey.



ARKANSAS



1:50,000

