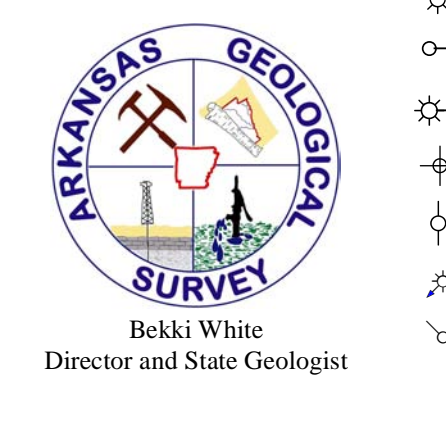


Fayetteville Shale Gas Play, Woodruff County



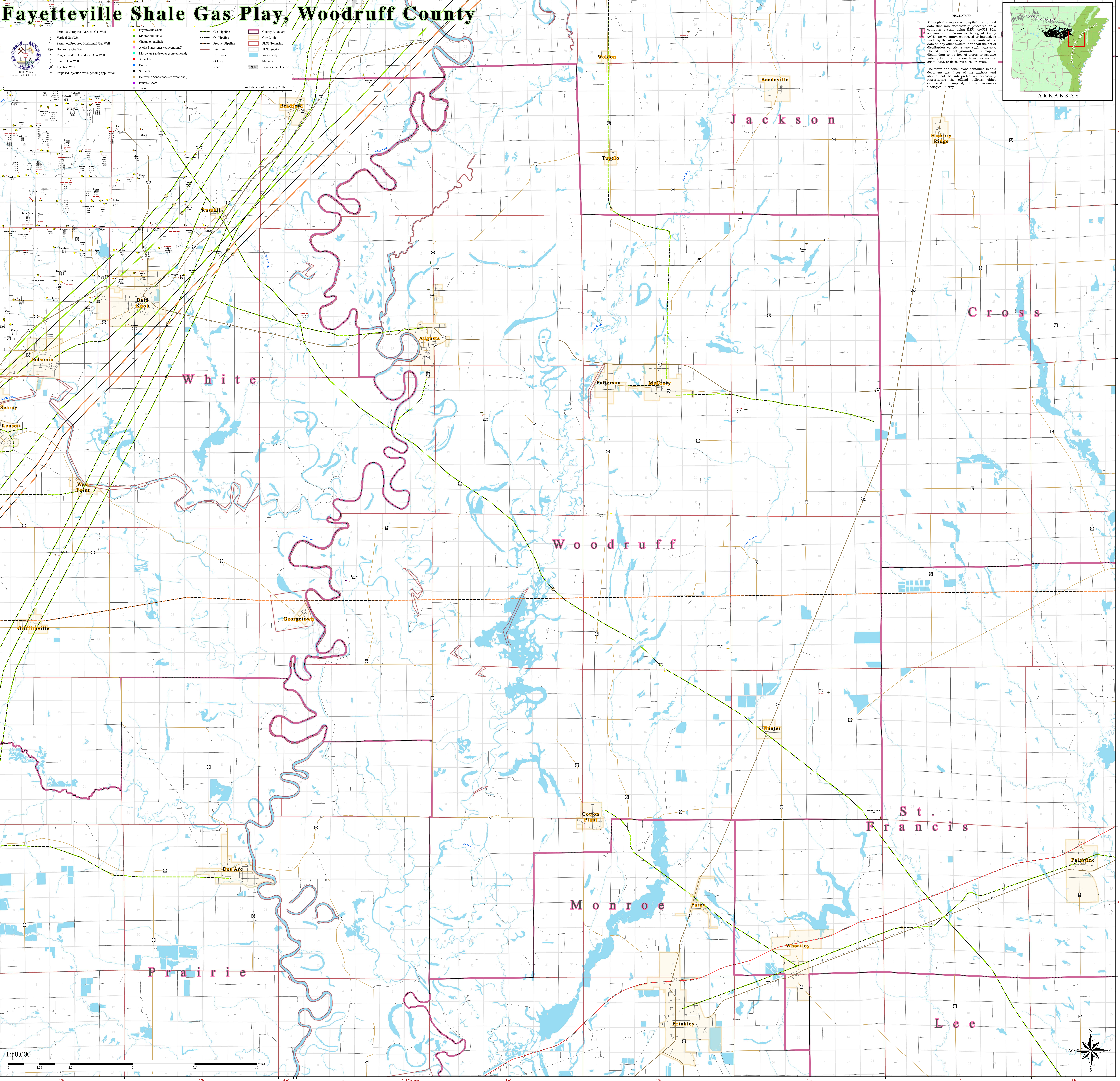
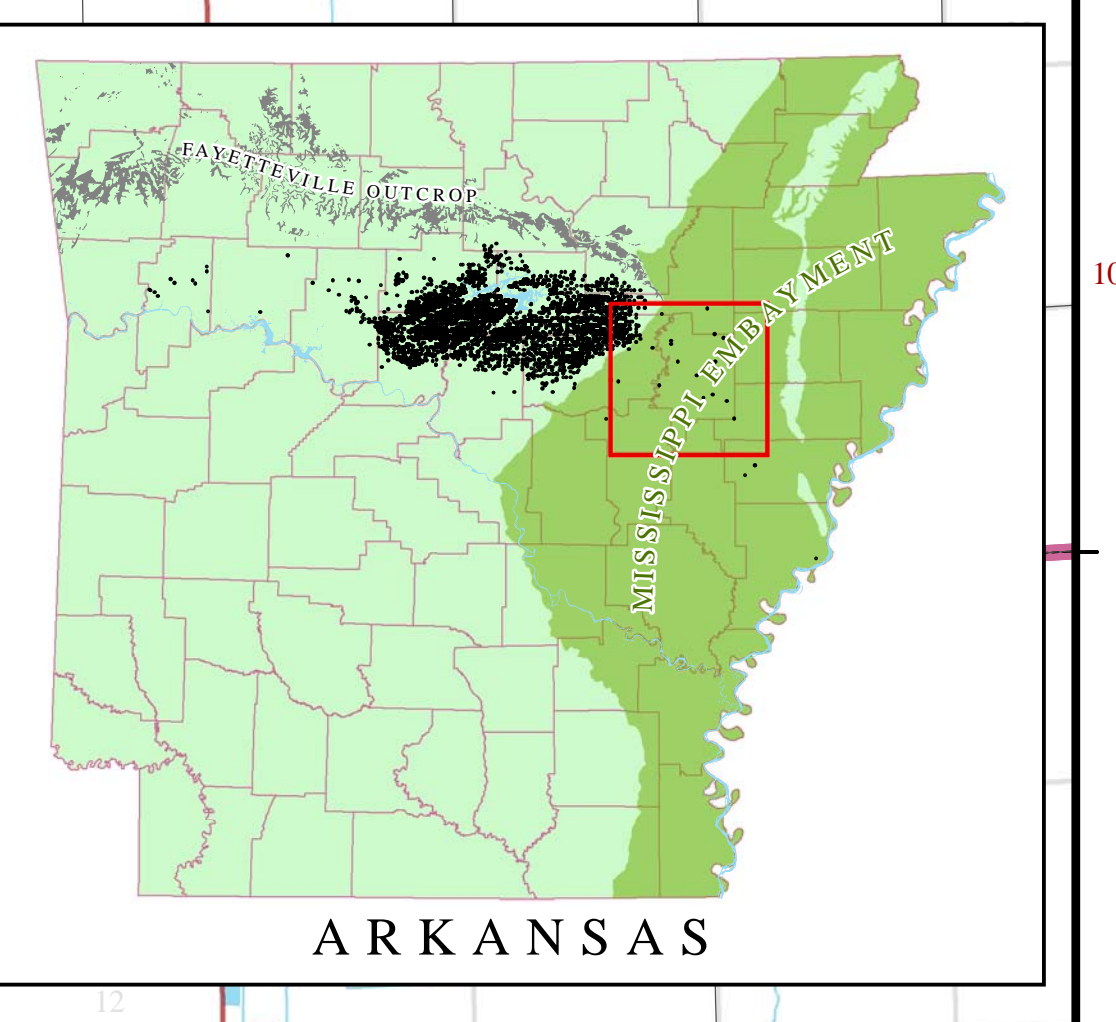
- Permitted/Proposed Vertical Gas Well
- Permitted/Proposed Horizontal Gas Well
- Plugged and/or Abandoned Gas Well
- Shut-In Gas Well
- Injection Well
- Proposed Injection Well, pending application
- Fayetteville Shale
- Moorefield Shale
- Chattanooga Shale
- Anoka Sandstones (conventional)
- Marcellus Sandstones (conventional)
- Ashfork
- Boone
- St. Peter
- Batesville Sandstones (conventional)
- Pennsylvanian Chert
- Gas Pipeline
- Oil Pipeline
- Product Pipeline
- Interstate
- US Hwy
- St Hwy
- Road
- County Boundary
- City Limits
- PLS Section
- PLS Section
- Water body
- Swamp
- Fayetteville Outcrop

Well data as of 8 January 2016

DISCLAIMER

Although this map was compiled from digital data that was successfully processed on a computer system using ESRI ArcGIS, the software of the Arkansas Geological Survey (AGS), no warranty, expressed or implied, is made by the AGS regarding the utility of the data on any other system, nor shall the act of distribution constitute any such warranty. The AGS does not guarantee this map or digital data to be free of errors or assume liability for interpretations from this map or digital data, or decisions based thereon.

The views and conclusions contained in this document are those of the authors and should not be interpreted as necessarily representing the official position, either expressed or implied, of the Arkansas Geological Survey.



1:50,000
0 1.25 2.5 5 7.5 10 Miles

