

Arkansas Geological Survey  
Bekki White, Director and State Geologist

# Recent Earthquakes in Northwest Arkansas

GH-EQ-MEDIA-MAP-002

## About the Map

This seismicity map is generated from an earthquake database maintained by the Arkansas Geological Survey. The purpose of this map is to provide the location of epicenters and magnitudes of selected earthquakes in northwest Arkansas. Each earthquake is labeled with its corresponding date and magnitude. Copies of this map are available from the Arkansas Geological Survey, Little Rock, Arkansas.

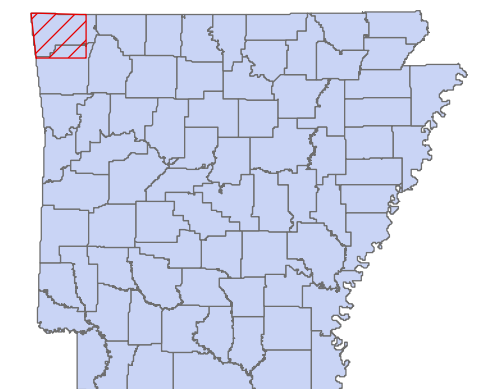


## Recent Earthquakes & Magnitudes

★ USGS/CERI/AGS Recent Events (2010)

## Symbols

- Faults
- Interstate Highways
- US Highways
- State Highways
- Incorporated Areas
- Water



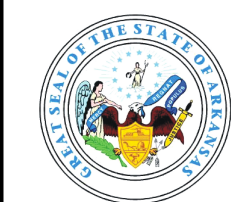
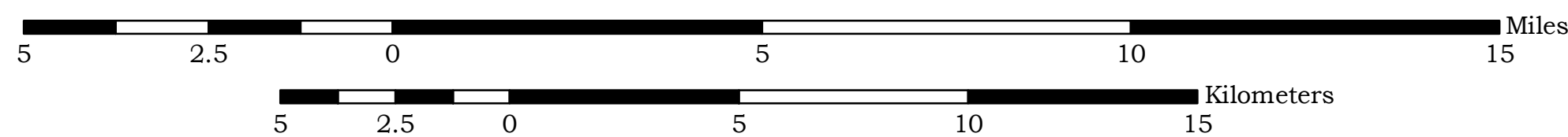
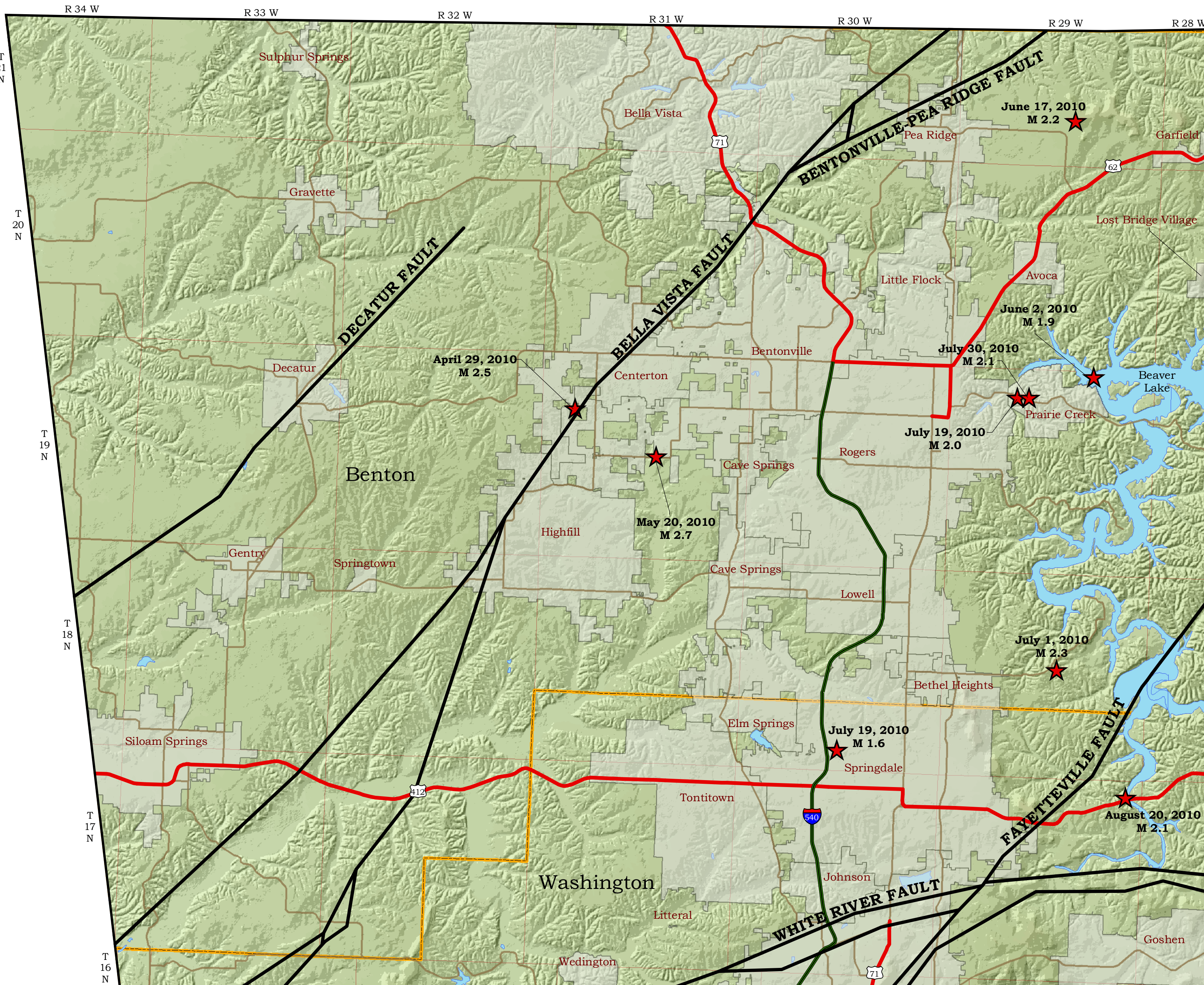
Arkansas

## Disclaimer

Although this map was compiled from digital data that was successfully processed on a computer system using ESRI ArcGIS 9.x software at the Arkansas Geological Survey (AGS), no warranty, expressed or implied, is made by the AGS regarding the unity of the data on any other system, nor shall the act of distribution constitute any such warranty. The AGS does not guarantee this map or digital data to be free of errors nor assume liability for interpretations made from this map or digital data, or decisions based thereon.

The views and conclusions contained in this document are those of the authors and should not be interpreted as necessarily representing the official policies, either expressed or implied, of the Arkansas Geological Survey.

The 5M DEM base used in the making of this map was acquired at the Spatial Analysis Laboratory, University of Arkansas, Monticello and some of the other Feature Class Data was acquired online at ([www.geostor.arkansas.gov](http://www.geostor.arkansas.gov)).



Scott M. Ausbrooks  
David H. Johnston  
2010

Revised Date:  
23 August 2010

Scale:  
1 : 130,000

Digital compilation:  
Jerry W. Clark  
Susan Horvath