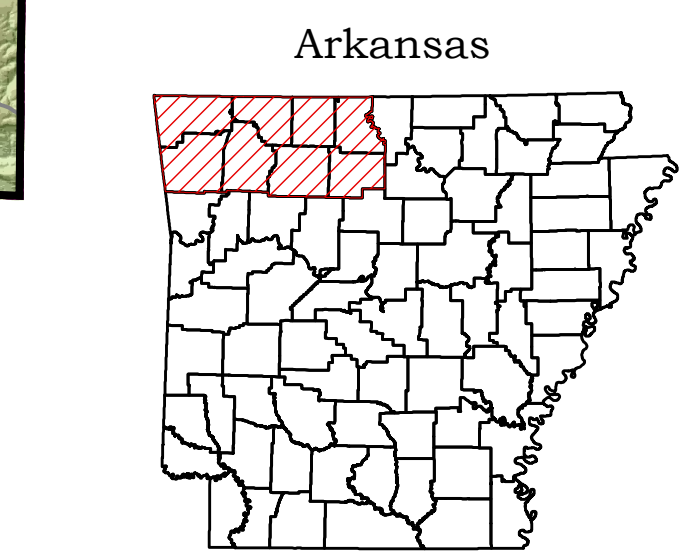
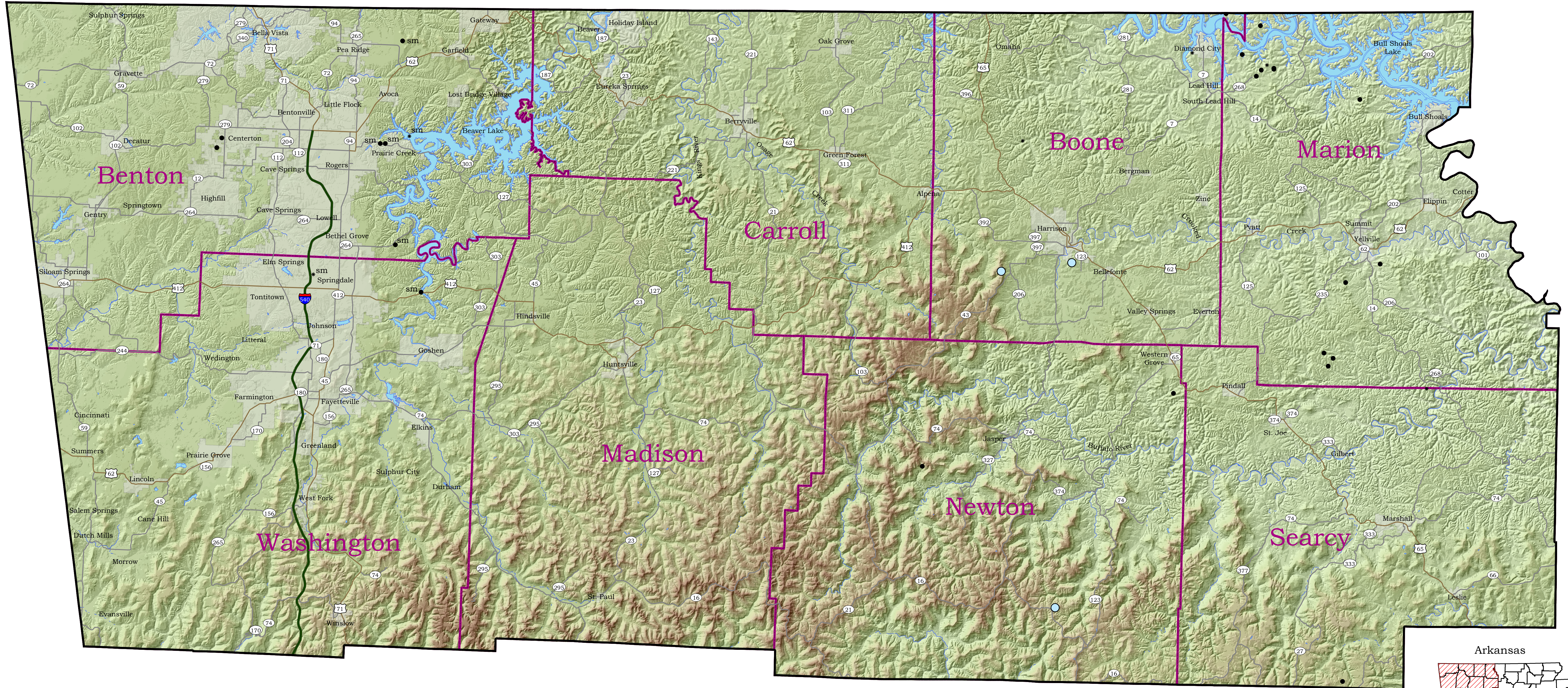


Seismicity of Northwest Arkansas



About the Map

This map illustrates the location and magnitude of reported earthquakes that have occurred in northwest Arkansas from 1925 to 2011. The data source for the earthquakes depicted on this map was derived from the Arkansas Geological Survey (AGS) earthquake catalog. This catalog has been compiled from various sources and publications and includes date, time, latitude, longitude, magnitude or intensity and depth information. Some event records may contain incomplete data due to their date and/or source. The AGS earthquake catalog is dynamic and continually updated as event parameters are modified, new events are added, and occasionally, events are deleted.

References

Advanced National Seismic System (ANSS) earthquake database web page: URL: <http://earthquake.usgs.gov/monitoring/annss/>

Center for Earthquake Research and Information (CERI) - New Madrid Earthquake Catalog: URL: http://folk.worm.ceri.memphis.edu/catalogs/html/cat_nm.html

United States Geological Survey USGS Earthquake Notification Service (ENS).

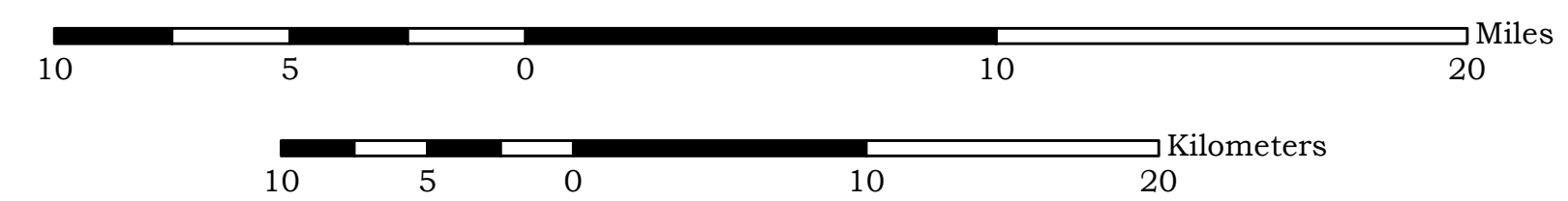
The basemap was acquired at the Spatial Analysis Laboratory, University of Arkansas at Monticello. The Feature Class Data was acquired at <http://www.geostor.arkansas.gov>

Earthquake Magnitudes

- 0 - 1.9
- 2.0 - 2.9
- 3.0 - 3.9
- sm Suspected Mine/Quarry Explosion

Symbols

- Interstate Highways
- US Highways
- State Highways
- Water
- Incorporated Areas



Disclaimer

Although this map was compiled from digital data that was successfully processed on a computer system using ESRI ArcGIS 10.x software at the Arkansas Geological Survey (AGS), no warranty, expressed or implied, is made by the AGS regarding the unity of the data on any other system, nor shall the act of distribution constitute any such warranty. The AGS does not guarantee this map or digital data to be free of errors or assume liability for interpretations from this map or digital data, or decisions based thereon.

The views and conclusions contained in this document are those of the authors and should not be interpreted as necessarily representing the official policies, either expressed or implied, of the Arkansas Geological Survey.

Scott M. Ausbrooks
David H. Johnston
William L. Prior
 2012

Revised Date: 01 June 2017 Scale: 1 : 250,000 Digital compilation: Jerry W. Clark