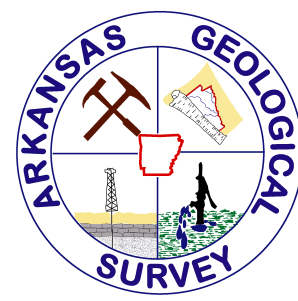
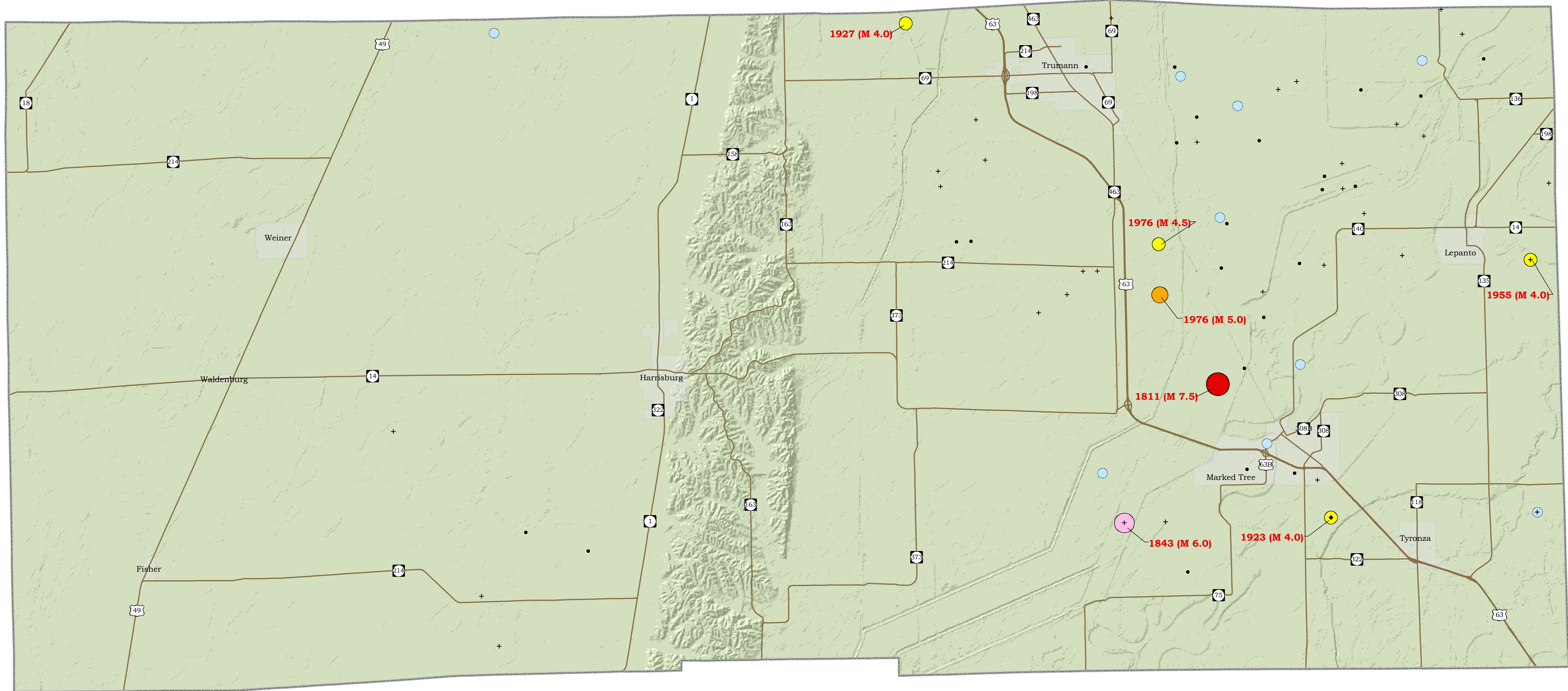
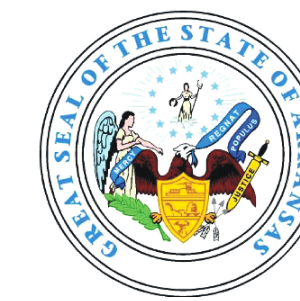


Poinsett County Seismicity Map



By Scott M. Ausbrooks and Erica Doerr
Arkansas Geological Survey, Bekki White, State Geologist
2008
Digital Compilation by Jerry W. Clark

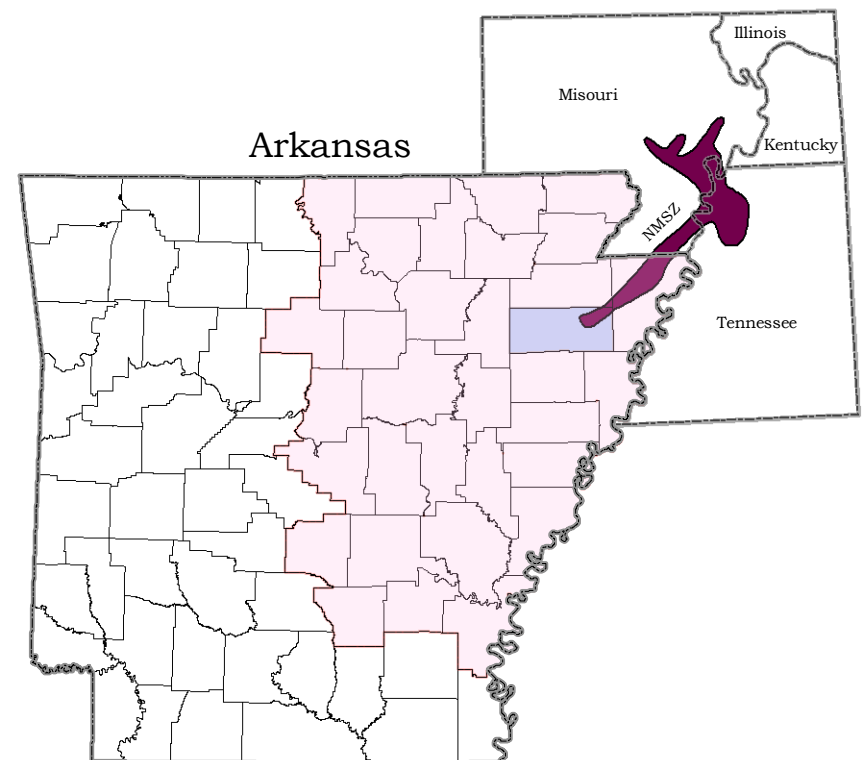


About the Map

This seismicity map is generated from an earthquake database maintained by the Arkansas Geological Survey. The database incorporates selected seismic events that have been recorded or reported in Arkansas since 1699. The purpose of this map is to provide the location of epicenters and magnitudes of earthquakes at the county level. Dates and earthquake magnitudes are labeled for all seismic events measuring magnitude 4.0 or greater.

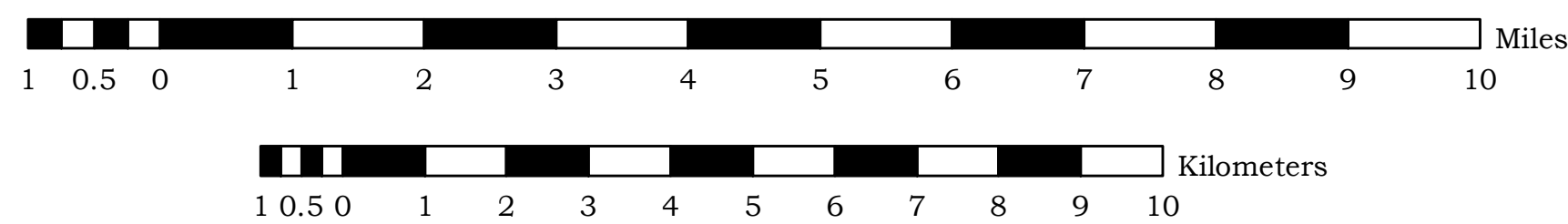
Acknowledgments

We extend our appreciation to John David McFarland III for compiling the original earthquake database used to make this map and for sharing his knowledge of Arkansas seismicity. We would also like to thank the Center for Earthquake Research and Information (CERI) at the University of Memphis for seismic data used to generate this map.



Poinsett County (shaded in blue) is located within the New Madrid seismic zone catastrophic planning area (shaded in pink), as designated by the Arkansas Department of Emergency Management (ADEM). The New Madrid seismic zone (NMSZ) is shaded in purple.

Revised: 19 June 2008



- Symbols**
- US Highways
 - State Highways
 - Incorporated Areas

Earthquake Magnitudes

- 0.0 - 1.9
- 2.0 - 2.9
- 3.0 - 3.9
- 4.0 - 4.9
- 5.0 - 5.9
- 6.0 - 6.9
- 7.0 +

Disclaimer

Although this map was compiled from digital data that was successfully processed on a computer system using ESRI ArcGIS 9.x software at the Arkansas Geological Survey (AGS), no warranty, expressed or implied, is made by the AGS regarding the unity of the data on any other system, nor shall the act of distribution constitute any such warranty. The AGS does not guarantee this map or digital data to be free of errors or liability for interpretations from this map or digital data, or decisions based thereon.

The views and conclusions contained in this document are those of the authors and should not be interpreted as necessarily representing the official policies, either expressed or implied, of the Arkansas Geological Survey.

The 5M DEM base used in the making of this map was acquired at the Spatial Analysis Laboratory, University of Arkansas, Monticello and some of the other bases were acquired at the GeoStor online.