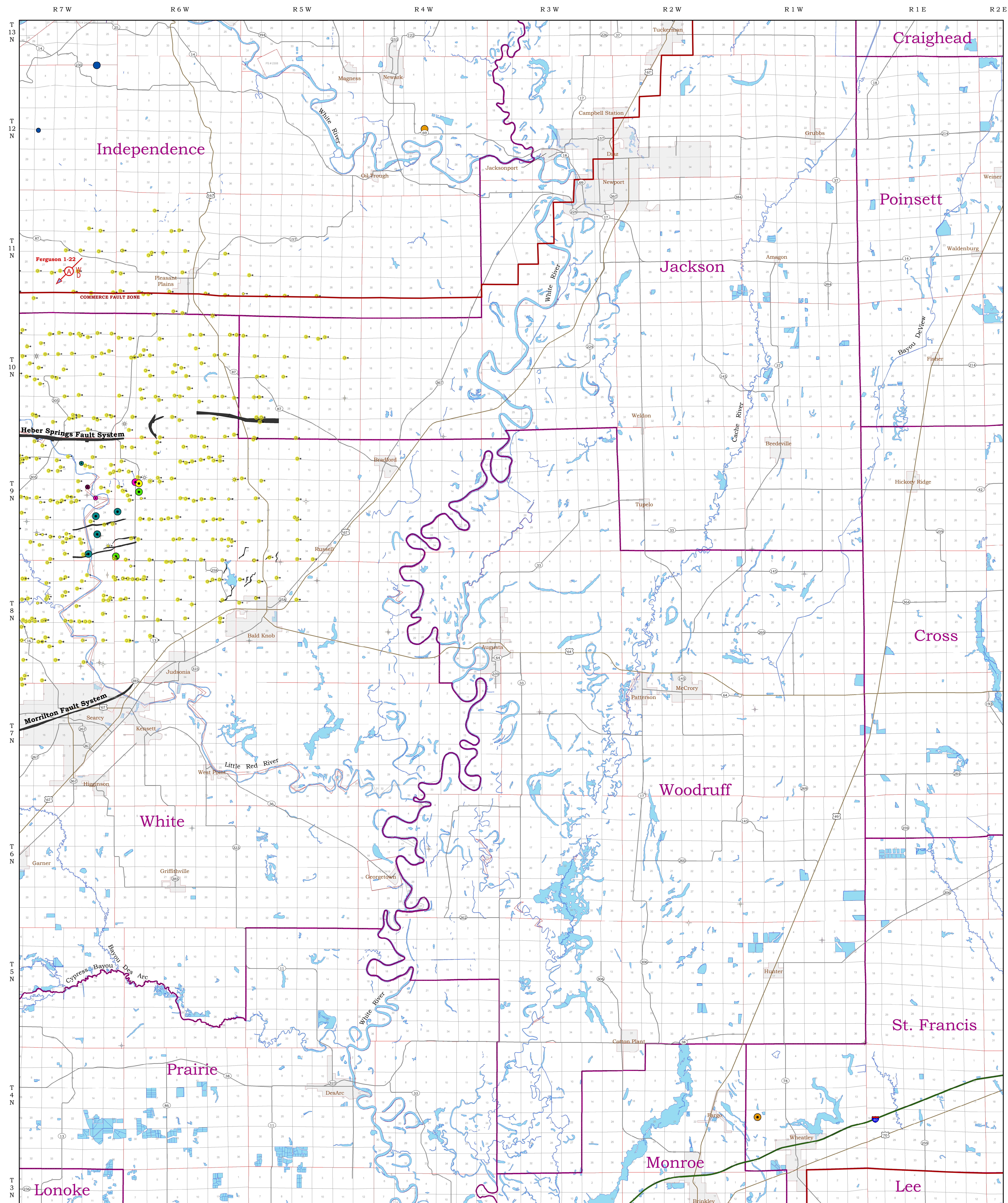


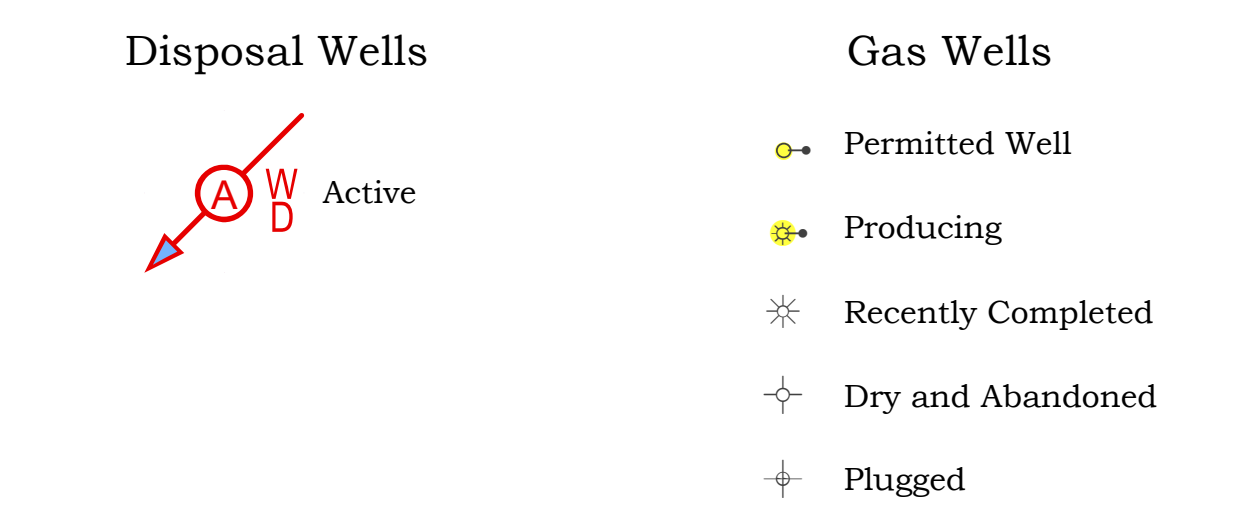
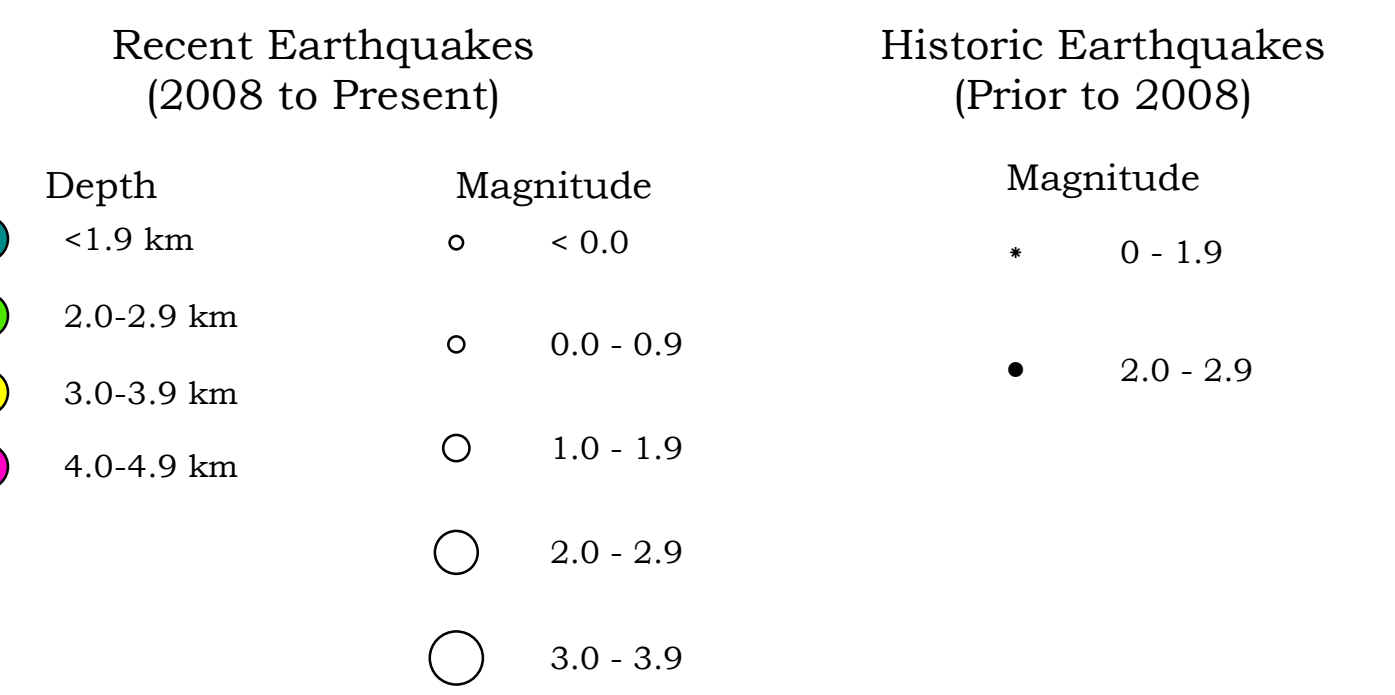
Compilation of Recent and Historic Earthquakes in the East Portion of the Fayetteville Shale Gas Play in North-Central Arkansas



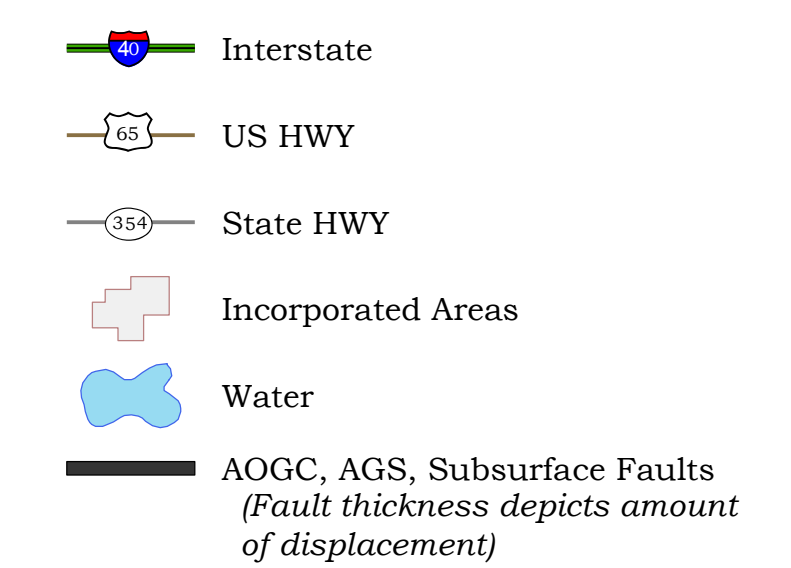
About the Map

This map illustrates the location and magnitude of reported earthquakes that have occurred in the east portion of the Fayetteville Shale Play in north-central Arkansas. The earthquakes depicted on this map are derived from the Arkansas Geological Survey (AGS) earthquake catalog. This catalog has been compiled from various sources and publications (given below as references) and includes date, time, latitude, longitude, magnitude or intensity, and depth information. Some event records may contain incomplete data due to their date and/or source. The AGS earthquake catalog is dynamic and continually updated as event parameters are modified, new events are added and occasionally past events are deleted.

The faults depicted on the map represent west-to-east trending subsurface normal faults. The majority of the faults are downthrown to the south and the amount of displacement varies along the length of the fault. The named fault systems represent a zone of single and multiple low to high-angle faults that typically form an echelon map pattern. In the subsurface, the high-angle faults extend from the Precambrian basement up to the Mississippian-Pennsylvanian unconformity while the lower angle faults extend from that unconformity through the Pennsylvanian strata and may or may not reach the surface. In the Fayetteville Shale Play, the majority of the earthquakes appear to originate from the deeper Precambrian basement and lower Paleozoic faults; however earthquakes have also occurred along the shallower upper Paleozoic faults.



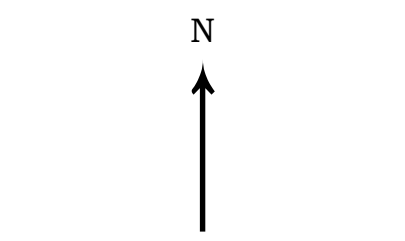
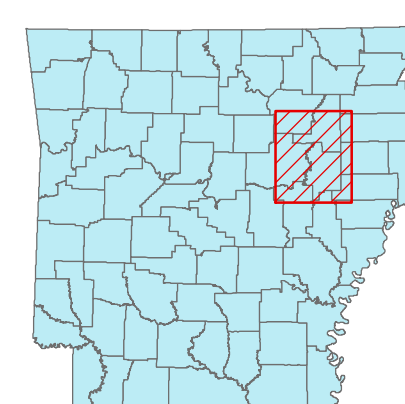
Map Symbols



References

- Advanced National Seismic System (ANSS) earthquake database web page: URL: <http://earthquake.usgs.gov/monitoring/anss/>
- Center for Earthquake Research and Information (CERI) - New Madrid Earthquake Catalog: URL: http://folk.worm.ceri.memphis.edu/catalogs/html/ca_t_nm.html
- National Center for Earthquake Engineering Research (NCEER) - earthquake catalog for the central and eastern United States, 1627-1985. URL: http://folk.worm.ceri.memphis.edu/catalogs/html/cat_nceer.html
- St. Louis University (SLU) Earthquake Center web page: URL: <http://www.cas.slu.edu/eqc/>
- Tennessee Earthquake Information Center (TEIC) - succeeded by University of Memphis - Center for Earthquake Research and Information (CERI) - taken from CERI New Madrid Earthquake Catalog: URL: http://www.ceri.memphis.edu/seismic/catalogs/cat_nm.html
- United States Geological Survey (USGS) Earthquake Notification Service (ENS).
- Faults provided by the AOGC were compiled from integration dockets prepared by various geologists of the companies operating in the Fayetteville Shale Gas Play. URL: <http://www.aogc.state.ar.us>
- Feature Class Data used in the making of this map was acquired online at: URL: <http://www.geosort.arkansas.gov>

Arkansas



Disclaimer

Although this map was compiled from digital data that was successfully processed on a computer system using ESRI ArcGIS 10.x software at the Arkansas Geological Survey (AGS), no warranty, expressed or implied, is made by the AGS regarding the utility of the data on any other system, nor shall the act of distribution constitute any such warranty. The AGS does not guarantee this map or digital data to be free of errors or assume liability for interpretations from this map or digital data, or decisions based thereon.

The views and conclusions contained in this document are those of the authors and should not be interpreted as necessarily representing the official policies, either expressed or implied, of the Arkansas Geological Survey.

The depicted earthquakes, faults and delineated seismic hazard zones are for illustration purposes and may or may not represent all seismically active faults and areas or indicate the exact origin of the earthquakes depicted on this map. The named faults and fault systems delineated on this map may or may not correspond with named faults at the surface or in the subsurface that originate from other published sources.

Scale

