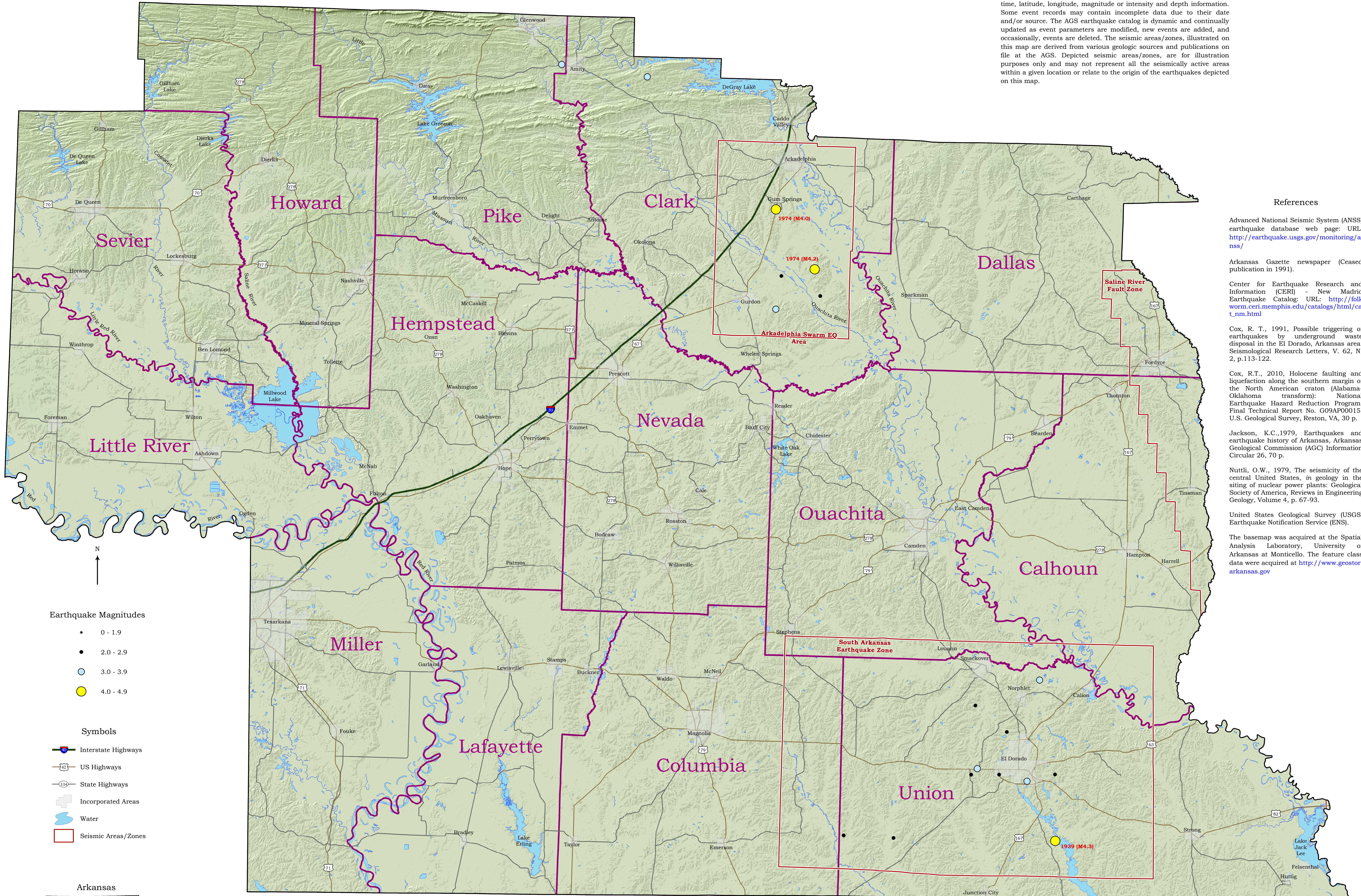


# Seismicity of Southwest Arkansas

This map illustrates the location and magnitude of reported earthquakes that have occurred in southwest Arkansas from 1938 to 2007. The data source for the earthquakes depicted on this map was derived from the Arkansas Geological Survey (AGS) earthquake catalog. This catalog has been compiled from various sources and publications and includes date, time, latitude, longitude, magnitude or intensity and depth information. Some event records may contain incomplete data due to their date and/or source. The AGS earthquake catalog is dynamic and continually updated as event parameters are modified, new events are added, and occasionally, events are deleted. The seismic areas/zones, illustrated on this map are derived from various geologic sources and publications on file at the AGS. Depicted seismic areas/zones, are for illustration purposes only and may not represent all the seismically active areas within a given location or relate to the origin of the earthquakes depicted on this map.



## References

Advanced National Seismic System (ANSS) earthquake database web page: URL: <http://earthquake.usgs.gov/monitoring/annss/>

Arkansas Gazette newspaper (Ceased publication in 1991).

Center for Earthquake Research and Information (CERI) - New Madrid Earthquake Catalog: URL: [http://folk.worm.ceri.memphis.edu/catalogs/html/ca\\_nm.html](http://folk.worm.ceri.memphis.edu/catalogs/html/ca_nm.html)

Cox, R. T., 1991, Possible triggering of earthquakes by underground waste disposal in the El Dorado, Arkansas area: Seismological Research Letters, V. 62, N. 2, p.113-122.

Cox, R.T., 2010, Holocene faulting and liquefaction along the southern margin of the North American craton (Alabama-Oklahoma transform): National Earthquake Hazard Reduction Program, Final Technical Report No. G09AP00015, U.S. Geological Survey, Reston, VA, 30 p.

Jackson, K.C., 1979, Earthquakes and earthquake history of Arkansas, Arkansas Geological Commission (AGC) Information Circular 26, 70 p.

Nuttli, O.W., 1979, The seismicity of the central United States, in geology in the siting of nuclear power plants: Geological Society of America, Reviews in Engineering Geology, Volume 4, p. 67-93.

United States Geological Survey (USGS) Earthquake Notification Service (ENS).

The basemap was acquired at the Spatial Analysis Laboratory, University of Arkansas at Monticello. The feature class data were acquired at <http://www.geosor.arkansas.gov>

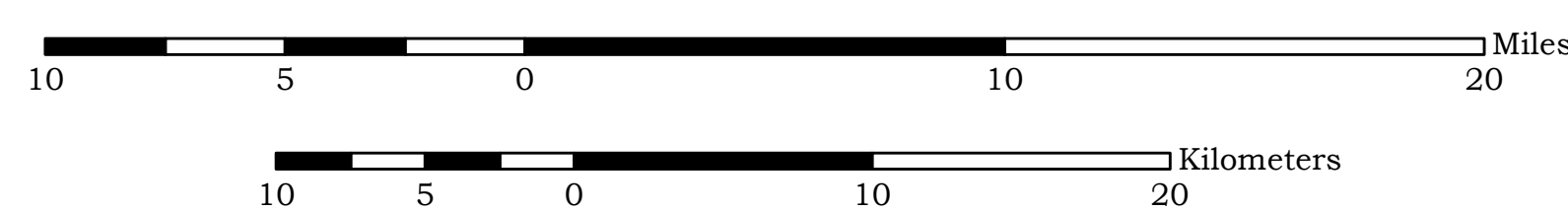
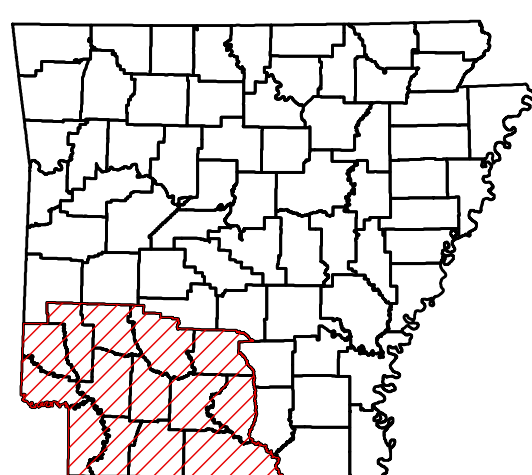
## Earthquake Magnitudes

- 0 - 1.9
- 2.0 - 2.9
- 3.0 - 3.9
- 4.0 - 4.9

## Symbols

- Interstate Highways
- US Highways
- State Highways
- Incorporated Areas
- Water
- Seismic Areas/Zones

## Arkansas



## Disclaimer

Although this map was compiled from digital data that was successfully processed on a computer system using ESRI ArcGIS 10.x software at the Arkansas Geological Survey (AGS), no warranty, expressed or implied, is made by the AGS regarding the unity of the data on any other system, nor shall the act of distribution constitute any such warranty. The AGS does not guarantee this map or digital data to be free of errors or assume liability for interpretations from this map or digital data, or decisions based thereon.

The views and conclusions contained in this document are those of the authors and should not be interpreted as necessarily representing the official policies, either expressed or implied, of the Arkansas Geological Survey.



Scott M. Ausbrooks  
David H. Johnston  
William L. Prior  
2012