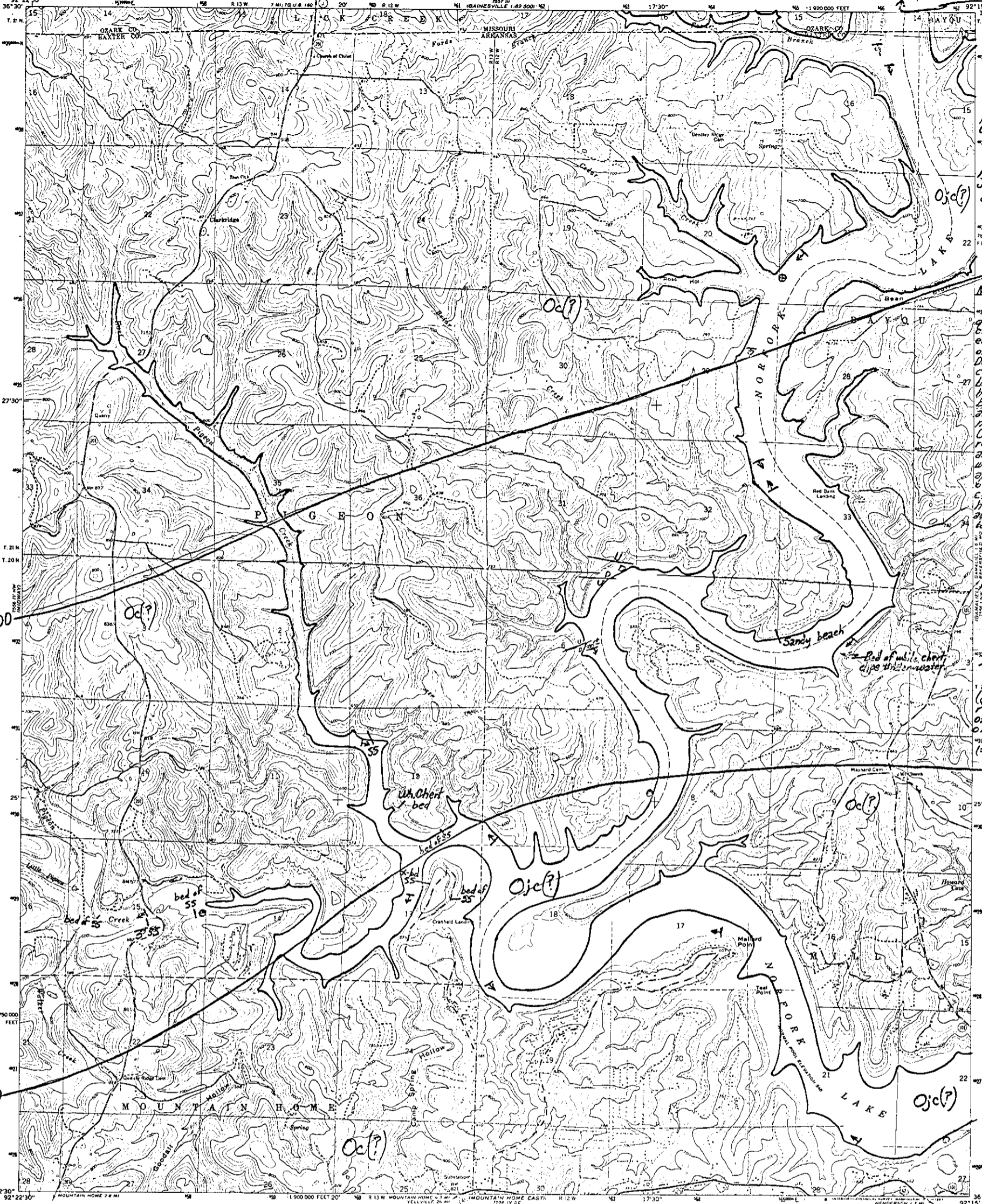


3 mi to
Ponbidoux
Outcrop.



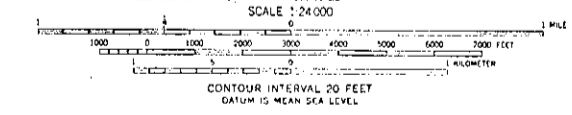
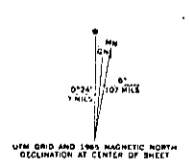
Ojc(?)
Probably
Cotter Dolomite

Ojc(?)
Possibly
Jefferson City
Dolomite

Note:
All rock cropping
out in this
quadrangle is
considered to be
either Cotter Dolomite
or Jefferson City
Dolomite (Ojc). The
contact between
these formations
here has not
been mapped
and may not be
mappable.
On the basis of
regional trends
and data from
wells, an
approximation
of the Ojc-Ojc
contact is
herein shown --
accuracy estimated
to be +/- 100'.
Dip and strike
and faults
along the shore
of Fork Lake
are recorded
from observing
made largely
from a boat
on the lake.

Structure
Contours
(drawn on
regional trends
of the top
of the
Cotter Dol.)
(= Powell-Cotter
Contact)
1000'

Mapped, edited, and published by the Geological Survey
Control by USGS and USC&GS
Topography by photogrammetric methods from aerial
photographs taken 1964. Field checked 1965
Polyconic projection. 1927 North American datum
10,000-foot grid based on Arkansas coordinate system, north zone
1000-meter Universal Transverse Mercator grid ticks,
zone 15, shown in blue
Areas covered by dashed light-blue pattern
are subject to controlled inundation
Fine red dashed lines indicate selected fence and field lines where
generally visible on aerial photographs. This information is un-checked



ROAD CLASSIFICATION

Heavy-duty	Light-duty
Medium-duty	Unimproved dirt
U.S. Route	State Route

E.E. Glick, U.S.G.S., 1974
CLARKRIDGE, ARK.—MO.
N36225—W9215/7.5

THIS MAP COMPLIES WITH NATIONAL MAP ACCURACY STANDARDS
FOR SALE BY U.S. GEOLOGICAL SURVEY, DENVER, COLORADO 80225 OR WASHINGTON, D.C. 20242.
ARKANSAS GEOLOGICAL COMMISSION, LITTLE ROCK, ARKANSAS 72201,
AND MISSOURI GEOLOGICAL SURVEY, ROLLA, MISSOURI 65401
A FOLDER DESCRIBING TOPOGRAPHIC MAPS AND SYMBOLS IS AVAILABLE ON REQUEST

1965
AMS 7558 IV NE—SERIES Y864

MASTER COPY