

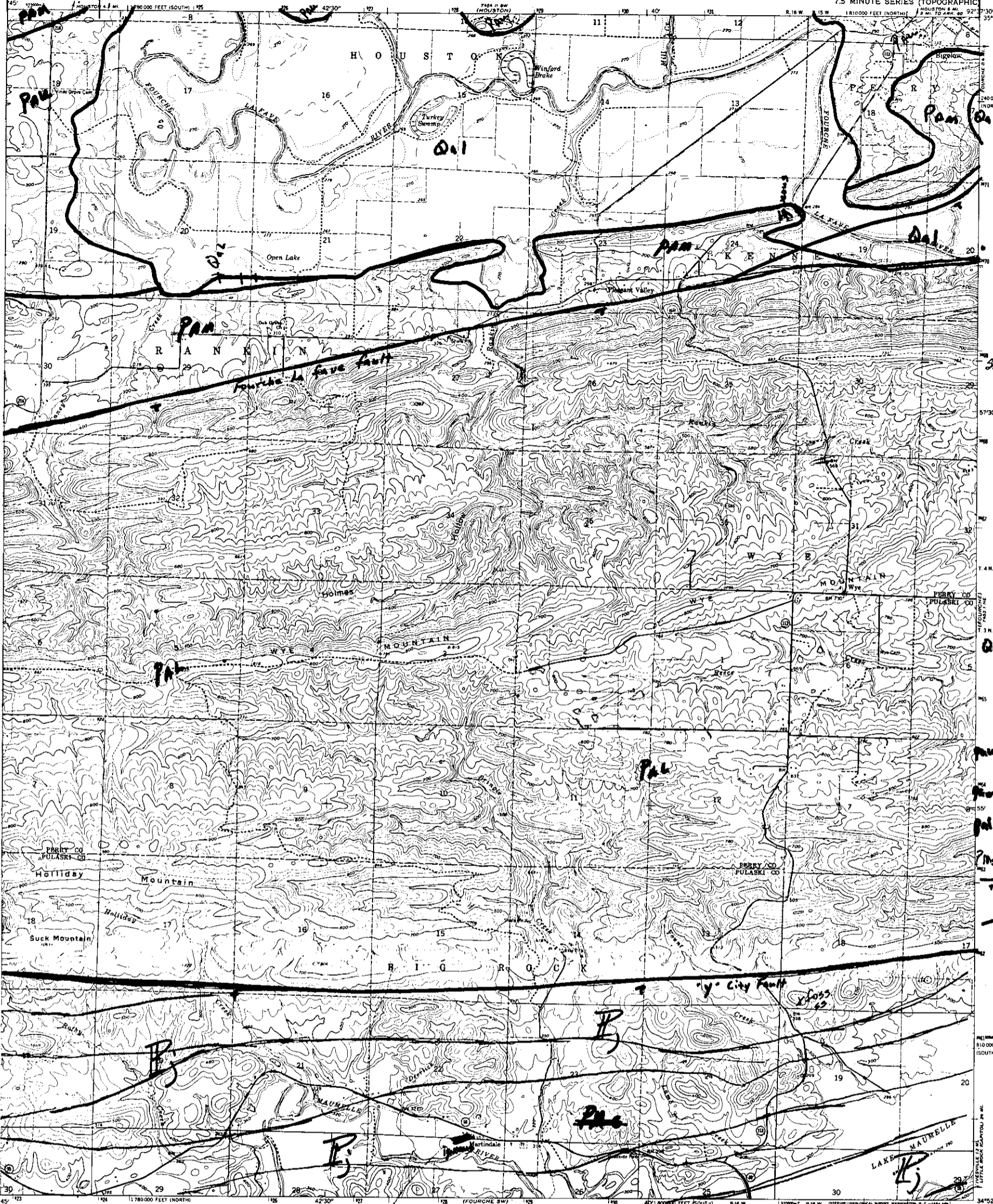
Reduce this line to this line

For Stone map

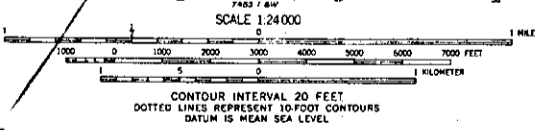
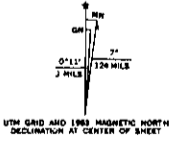
Mr. Haley

UNITED STATES DEPARTMENT OF THE INTERIOR GEOLOGICAL SURVEY

MARTINDALE QUADRANGLE ARKANSAS 7.5 MINUTE SERIES (TOPOGRAPHIC)



Mapped, edited, and published by the Geological Survey  
Control by USGS, USC&GS, and USCE  
Topography by photogrammetric methods from aerial photographs taken 1960. Field checked 1963  
Polyconic projection. 1927 North American datum  
10,000-foot grids based on Arkansas coordinate system, north and south zones  
2000-meter Universal Transverse Mercator grid ticks, zone 15, shown in blue  
Fine red dashed lines indicate selected fence and field lines where generally visible on aerial photographs. This information is unchecked



THIS MAP COMPLIES WITH NATIONAL MAP ACCURACY STANDARDS FOR SALE BY U. S. GEOLOGICAL SURVEY, DENVER 25, COLORADO OR WASHINGTON 25, D. C. AND BY THE ARKANSAS GEOLOGICAL COMMISSION, LITTLE ROCK, ARKANSAS A FOLDER DESCRIBING TOPOGRAPHIC MAPS AND SYMBOLS IS AVAILABLE ON REQUEST



Stone & Haley  
Heavy-duty ... Light-duty ...  
Medium-duty ... Unimproved dirt ...  
State Route

C. G. Stone  
Sept. 1968

MARTINDALE, ARK.  
N3452.5-W9237.5/7.5  
1963  
AMS 7453 1 NW-SERIES Y84

MASTER COPY