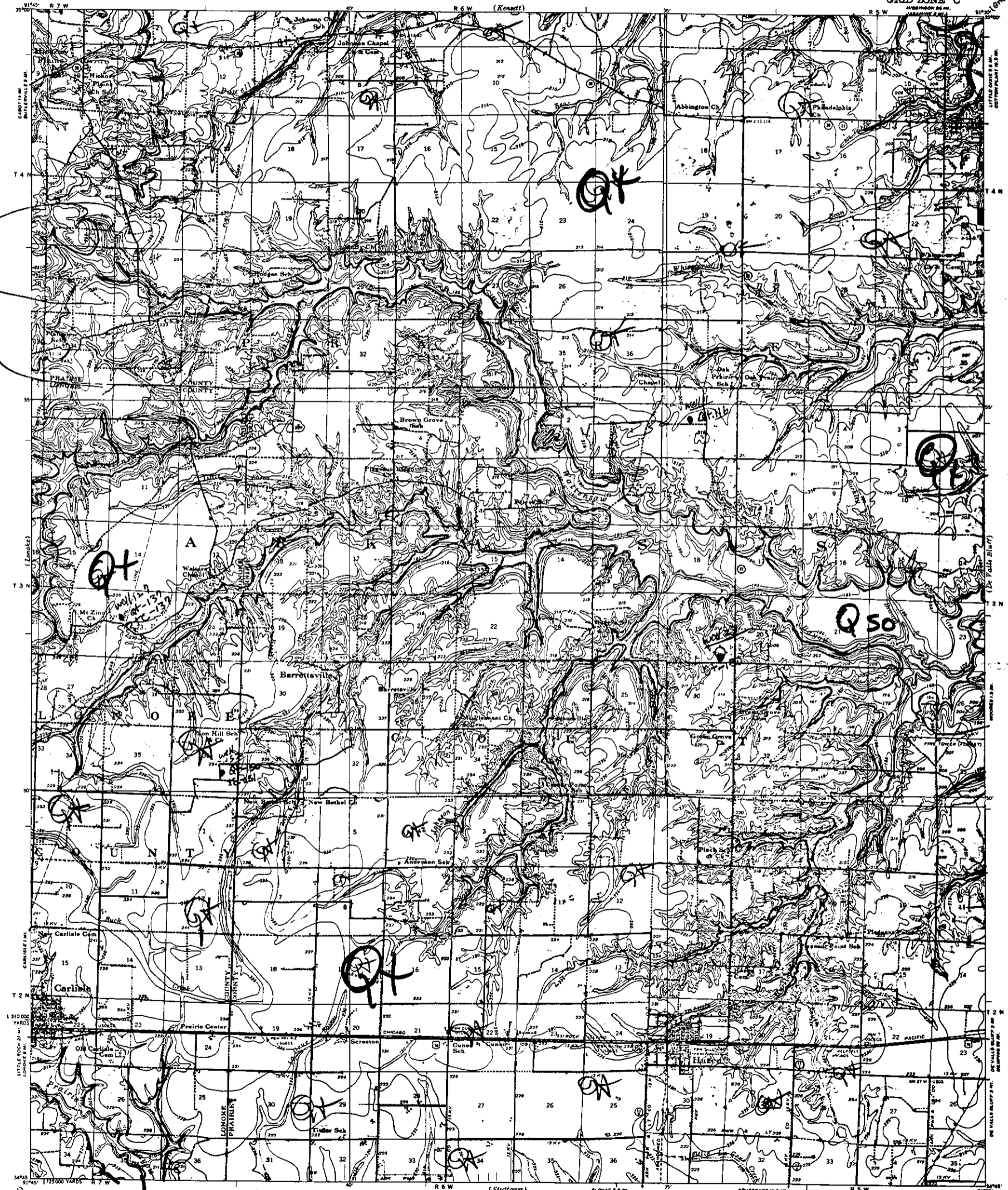


WAR DEPARTMENT
CORPS OF ENGINEERS

ARKANSAS
HAZEN QUADRANGLE
GRID ZONE 'C'



Copy to be
Eradicated

Prepared under the direction of the President, Mississippi River Commission.
Horizontal control by Corps of Engineers, U. S. Army, Memphis District and U.S.C.A.G.S.
Vertical control by Corps of Engineers, U. S. Army, Memphis District.
Description, elevations and geodetic positions of bench marks may be obtained from Memphis Engineer District, Topography by Corps of Engineers, U. S. Army, Memphis District, 1931-41.
Revised by Mississippi River Commission, 1933, 1935 and 1941.
Political boundaries are shown according to best available information and are subject to change except where established by court decision.
Polyconic Projection, North American Datum.



Contour interval 5 feet
Datum is mean gulf level at Sluic, Mississippi. Elevations differ from mean sea level elevations as determined by the U. S. Coast and Geodetic Survey, by small fractions of a foot. Persons interested may secure elevations of bench marks as determined by the latest U. S. C. & G. S. adjustment, by applying to the U. S. Coast and Geodetic Survey.
FOR INFORMATION: VARIOUS BENCH MARKS SHOWN ON THIS MAP ARE NOT NECESSARILY THE SAME AS THOSE SHOWN ON OTHER MAPS.
U. S. G. O. - 2008 C. W. S. C. & G. S. OFFICIAL PUBLICATIONS DIVISION

PRINTED BY ARMY MAP SERVICE, CORPS OF ENGINEERS, 9-54 101024
LEGEND
Levee
Retards and dikes
Revolvement
Row Cane
Levee mile post
Levee station
Tonhead
L.M.P.
L.S.
T.H.
APPROXIMATE MEAN
MAGNETIC DECLINATION 1942
MAGNETIC CHANGE BY
INCHES
HAZEN
HAZEN QUADRANGLE
HAZEN IMPERVIOUS SURFACES
OTHER SURFACE IMPROVEMENTS
U. S. ROUTE
STATE ROUTE

Additional copies may be procured from
The President, Mississippi River Commission,
Vicksburg, Miss. 20 cents per copy

HAZEN, ARK.
EDITION OF 1941
H3445-W9130/15

MASTER COPY