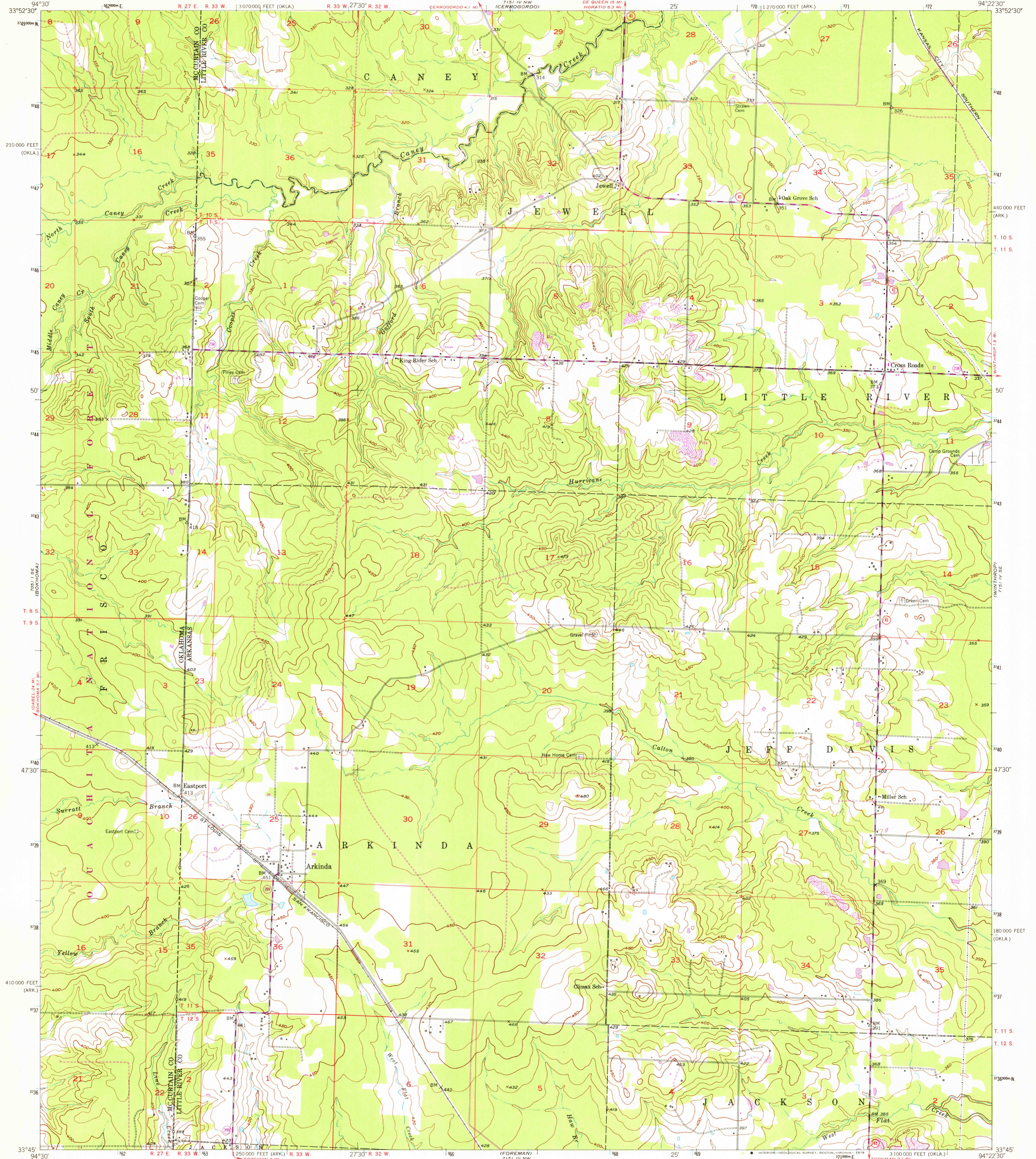


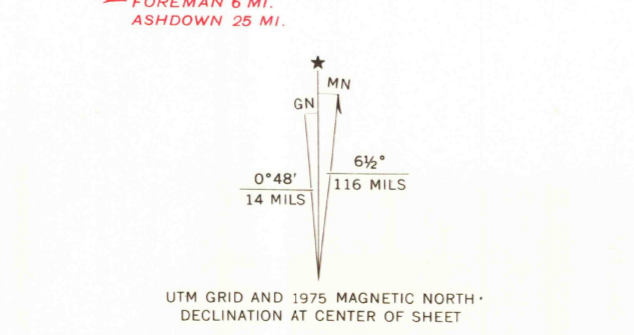
62281 W.F. 100' 11" E



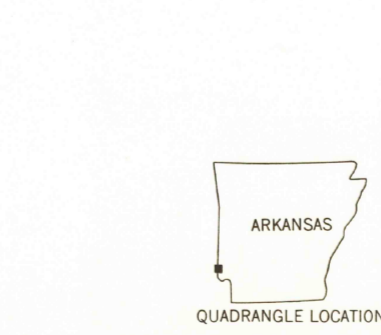
7151 IV NW (HARRIS) 100' 11" E



Mapped, edited, and published by the Geological Survey Control by USGS, USC&GS, and USCE Culture and drainage in part compiled from aerial photographs taken 1949. Topography by plane-table surveys 1951 Polyconic projection. 1927 North American datum 10,000-foot grids based on Arkansas coordinate system, south zone, and Oklahoma coordinate system, south zone 1000-metre Universal Transverse Mercator grid ticks, zone 15, shown in blue Revisions shown in purple compiled from aerial photographs taken 1975. This information not field checked There may be private inholdings within the boundaries of the National or State reservations shown on this map



SCALE 1:24 000 CONTOUR INTERVAL 10 FEET NATIONAL GEODETIC VERTICAL DATUM OF 1929



ROAD CLASSIFICATION Heavy-duty 4 LANE, 16 LANE Light-duty Medium-duty 4 LANE, 16 LANE Unimproved dirt U.S. Route State Route JUL 18 1979 USGS Historical File Topographic Division ARKINDA, ARK.-OKLA. N3345-W9422.5/7.5 1951 PHOTOREVISED 1975 DMA 7151 IV SW-SERIES V884 8150

THIS MAP COMPLIES WITH NATIONAL MAP ACCURACY STANDARDS FOR SALE BY U.S. GEOLOGICAL SURVEY, DENVER, COLORADO 80225, OR RESTON, VIRGINIA 22092. ARKANSAS GEOLOGICAL COMMISSION, LITTLE ROCK, ARKANSAS 72204. AND OKLAHOMA GEOLOGICAL SURVEY, NORMAN, OKLAHOMA 73069. A FOLDER DESCRIBING TOPOGRAPHIC MAPS AND SYMBOLS IS AVAILABLE ON REQUEST