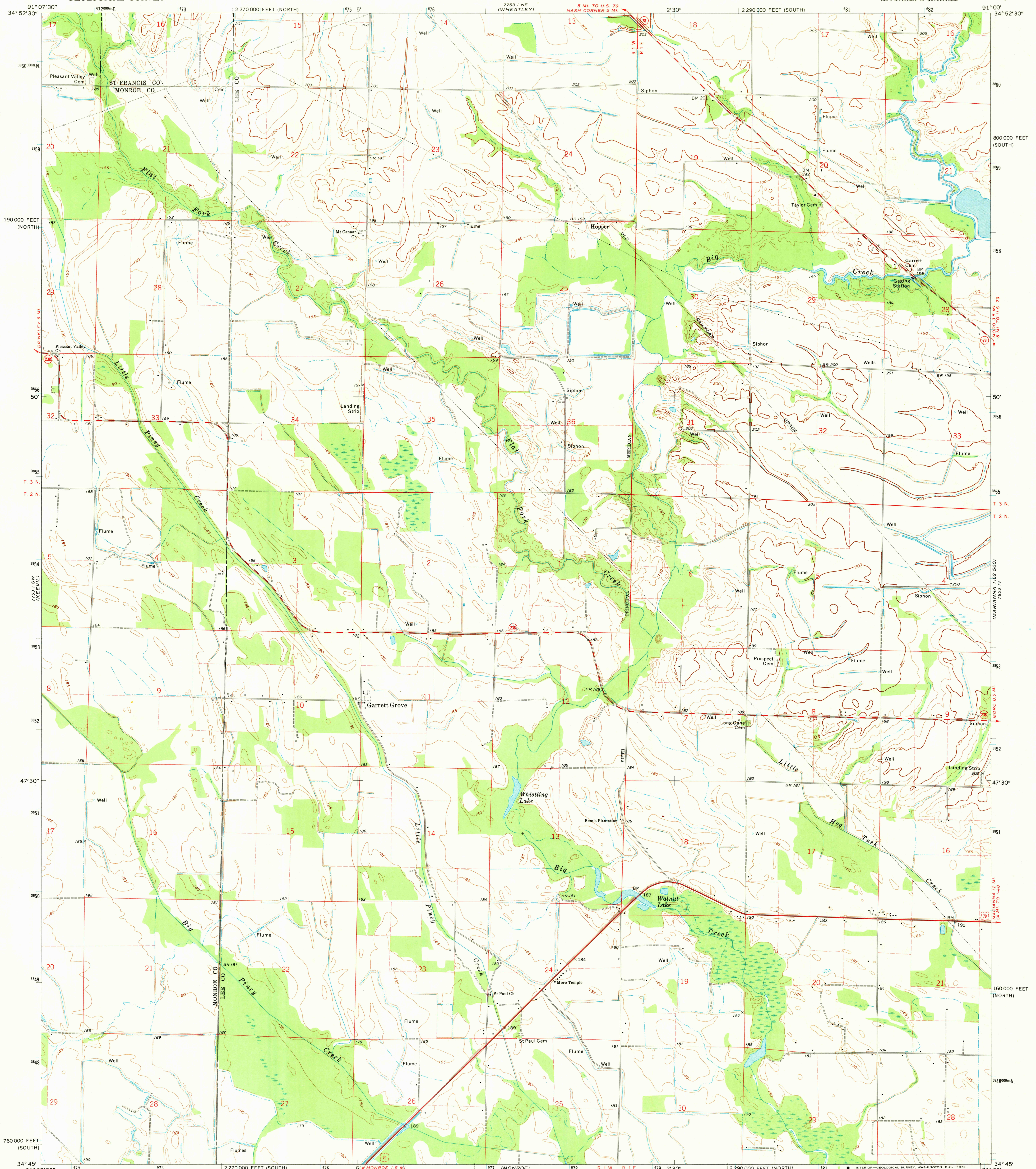
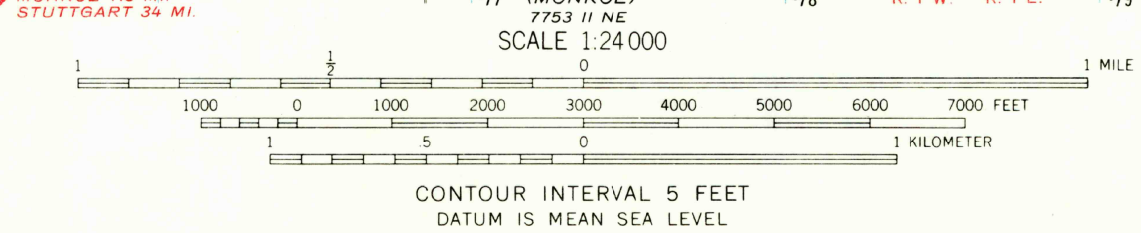
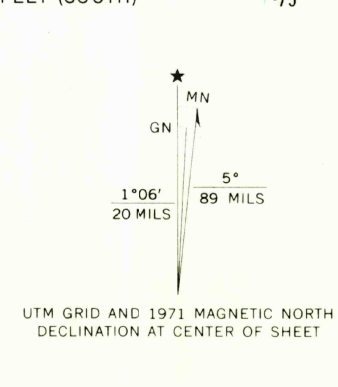


UNITED STATES  
DEPARTMENT OF THE INTERIOR  
GEOLOGICAL SURVEY

GARRETT GROVE QUADRANGLE  
ARKANSAS  
7.5 MINUTE SERIES (TOPOGRAPHIC)  
SE/4 BRINKLEY 15' QUADRANGLE



Mapped, edited, and published by the Geological Survey  
Control by USGS and USC&GS  
Topography by photogrammetric methods from aerial  
photographs taken 1970. Field checked 1971  
Projection: Arkansas coordinate system, south zone  
(Lambert conformal conic)  
10,000-foot grid ticks based on Arkansas coordinate  
system, south and north zones  
1000-meter Universal Transverse Mercator grid ticks,  
zone 15, shown in blue. 1927 North American datum  
Fine red dashed lines indicate selected fence and field lines where  
generally visible on aerial photographs. This information is unchecked



ROAD CLASSIFICATION  
Primary highway, hard surface  
Secondary highway, hard surface  
Light-duty road, hard or improved surface  
Unimproved road  
Interstate Route  
U. S. Route  
State Route

THIS MAP COMPLIES WITH NATIONAL MAP ACCURACY STANDARDS  
FOR SALE BY U.S. GEOLOGICAL SURVEY, DENVER, COLORADO 80225, OR WASHINGTON, D. C. 20242  
AND BY THE ARKANSAS GEOLOGICAL COMMISSION, LITTLE ROCK, ARKANSAS 72201  
A FOLDER DESCRIBING TOPOGRAPHIC MAPS AND SYMBOLS IS AVAILABLE ON REQUEST

GARRETT GROVE, ARK.  
SE/4 BRINKLEY 15' QUADRANGLE  
N3445-W9100/7.5