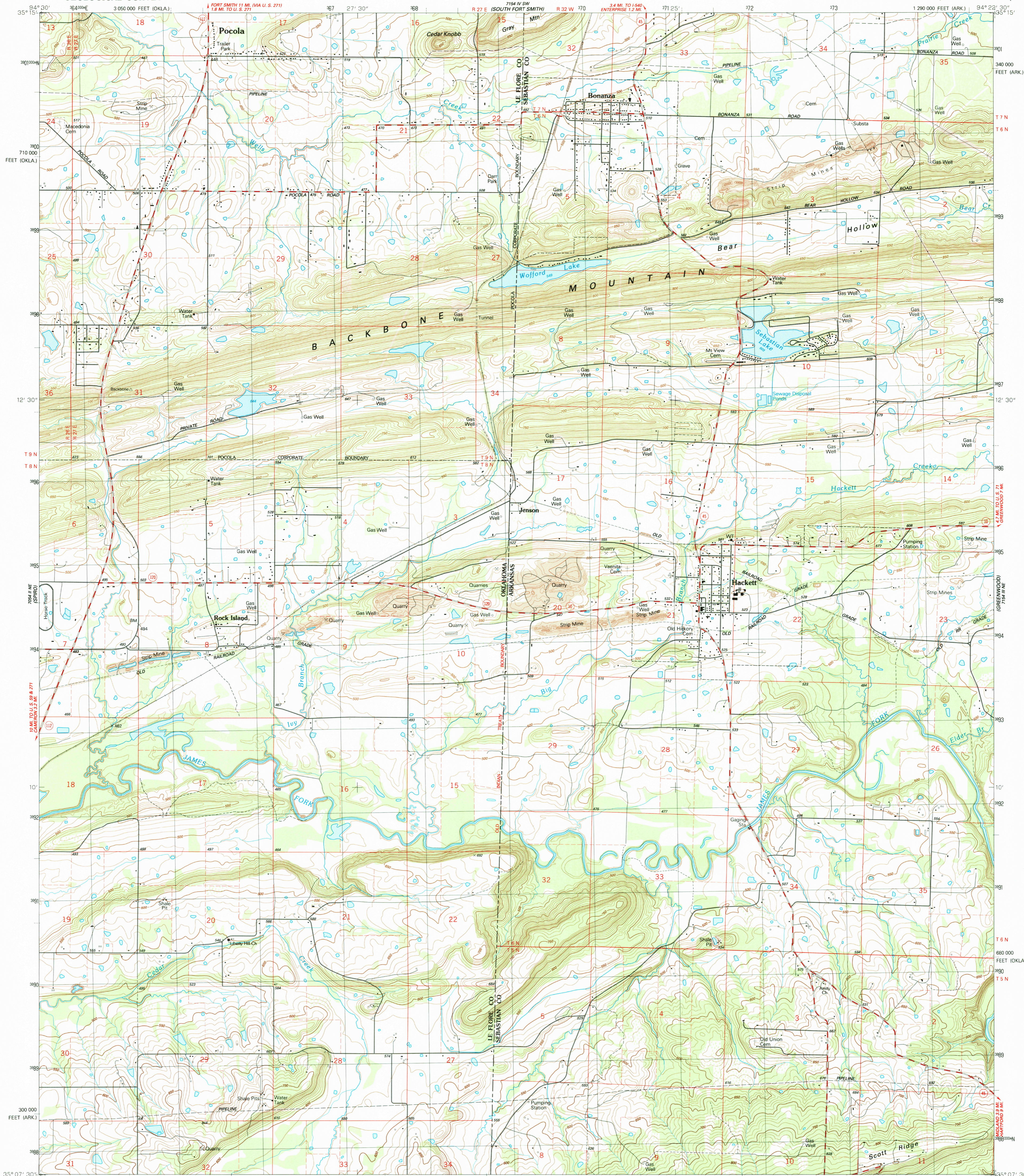


UNITED STATES  
DEPARTMENT OF THE INTERIOR  
GEOLOGICAL SURVEY

HACKETT QUADRANGLE  
ARKANSAS-OKLAHOMA  
7.5 MINUTE SERIES (TOPOGRAPHIC)  
NW4 GREENWOOD 15' QUADRANGLE



Produced by the United States Geological Survey

Control by USGS and NOS/NOAA

Topography by photogrammetric methods from aerial photographs taken 1983. Field checked 1985. Map edited 1987

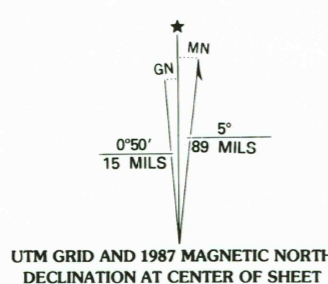
Supersedes Army Map Service map dated 1948

Projection and 10,000-foot grid ticks: Arkansas coordinate system, north zone, and Oklahoma coordinate system, south zone (Lambert conformal conic)

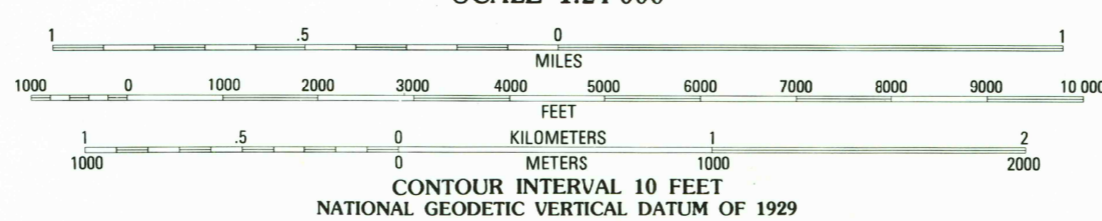
1000-meter Universal Transverse Mercator grid, zone 15 1927 North American Datum

To place on the predicted North American Datum 1983, move the projection lines 6 meters south and 19 meters east as shown by dashed corner ticks

There may be private inholdings within the boundaries of the National or State reservations shown on this map



SCALE 1:24 000



ROAD CLASSIFICATION

Primary highway, hard surface	Light-duty road, hard or improved surface
Secondary highway, hard surface	Unimproved road
Interstate Route	U. S. Route
	State Route



HACKETT, ARK.-OKLA.  
NW4 GREENWOOD 15' QUADRANGLE  
35094-B4-TF-024  
1987  
DMA 7154 III NW-SERIES V884

THIS MAP COMPLIES WITH NATIONAL MAP ACCURACY STANDARDS  
FOR SALE BY U.S. GEOLOGICAL SURVEY, DENVER, COLORADO 80225, OR RESTON, VIRGINIA 22092  
ARKANSAS GEOLOGICAL COMMISSION, LITTLE ROCK, ARKANSAS 72204  
AND OKLAHOMA GEOLOGICAL SURVEY, NORMAN, OKLAHOMA 73069  
A FOLDER DESCRIBING TOPOGRAPHIC MAPS AND SYMBOLS IS AVAILABLE ON REQUEST