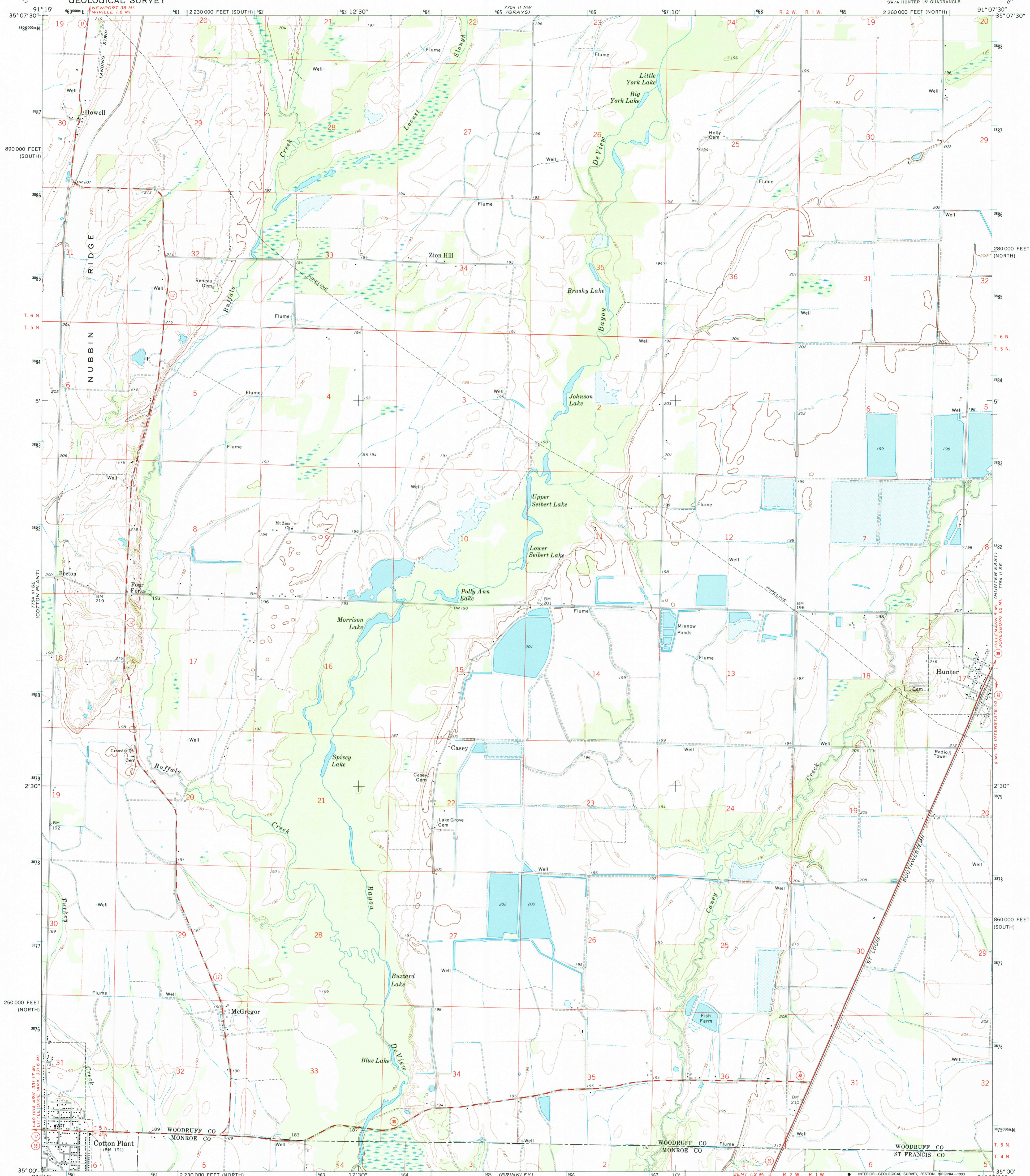
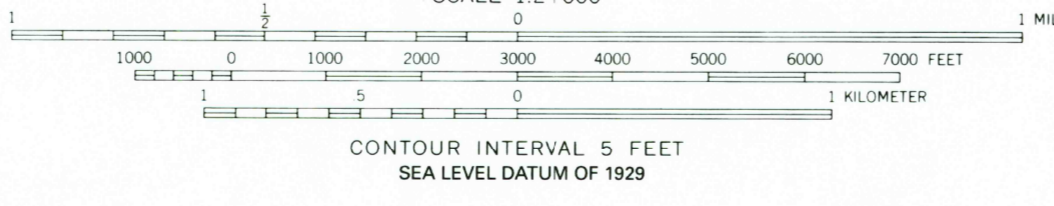
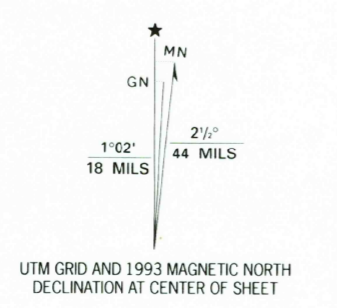


UNITED STATES
DEPARTMENT OF THE INTERIOR
GEOLOGICAL SURVEY

HUNTER WEST QUADRANGLE
ARKANSAS
7.5 MINUTE SERIES (TOPOGRAPHIC)



Produced by the United States Geological Survey
Control by USGS and NOS/NOAA
Topography by photogrammetric methods from aerial photographs taken 1970. Field checked 1971.
Projection: Arkansas coordinate system, north zone (Lambert conformal conic)
10,000 foot grid ticks: Arkansas coordinate system, north and south zones
1000-meter Universal Transverse Mercator grid ticks, zone 15, shown in blue
1927 North American Datum (NAD 27)
North American Datum of 1983 (NAD 83) is shown by dashed corner ticks
The values of the shift between NAD 27 and NAD 83 for 7.5-minute intersections are given in USGS Bulletin 1875
Fine red dashed lines indicate selected fence and field lines where generally visible on aerial photographs. This information is unchecked
Photinspected from 1990 source; no major culture or drainage changes observed. Boundaries revised and names verified 1993



ROAD CLASSIFICATION
 Primary highway, hard surface
 Secondary highway, hard surface
 Interstate Route
 U. S. Route
 State Route
 Light-duty road, hard or improved surface
 Unimproved road

THIS MAP COMPLIES WITH NATIONAL MAP ACCURACY STANDARDS
FOR SALE BY U.S. GEOLOGICAL SURVEY, DENVER, COLORADO 80225, OR RESTON, VIRGINIA 22092
AND ARKANSAS GEOLOGICAL COMMISSION, LITTLE ROCK, ARKANSAS 72204
A FOLDER DESCRIBING TOPOGRAPHIC MAPS AND SYMBOLS IS AVAILABLE ON REQUEST

USGS 1993 HISTORICAL MAP ARCHIVES
SEP 24 1995
REC'D FILE COPY

HUNTER WEST, ARK.
SW/4 HUNTER 15' QUADRANGLE
35091-A2-TF-024
1971
MINOR REVISION 1993
DMA 7754 II SW-SERIES V884