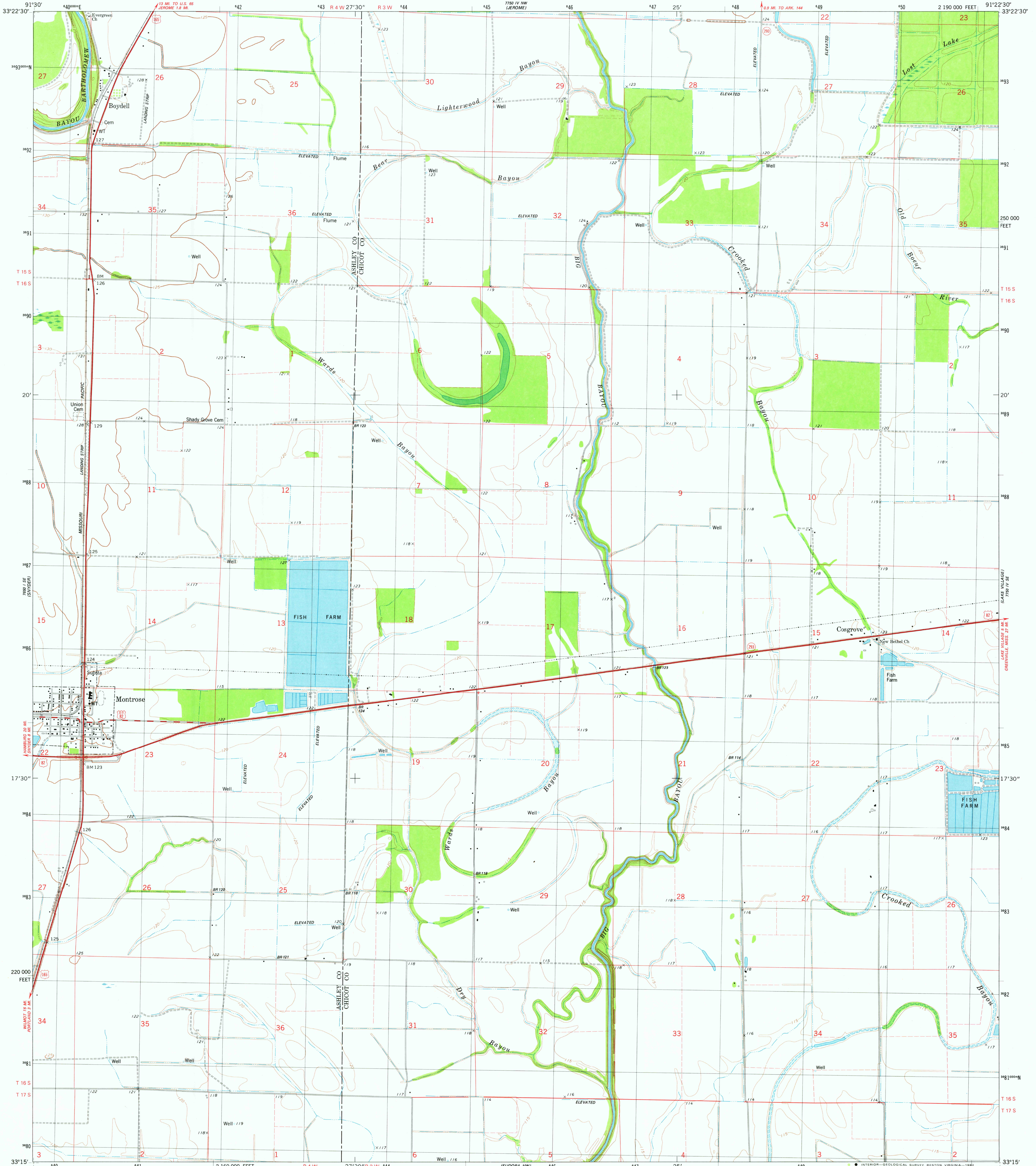


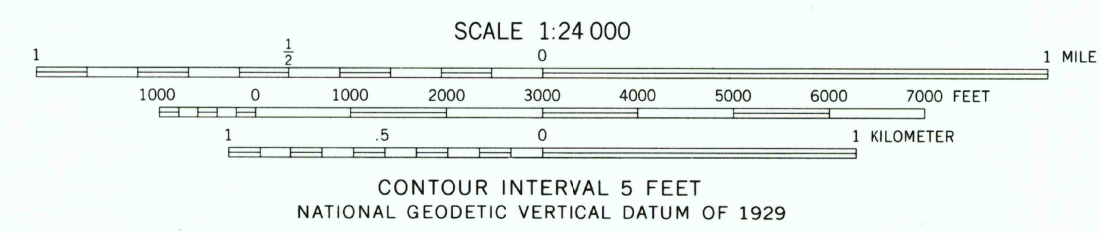
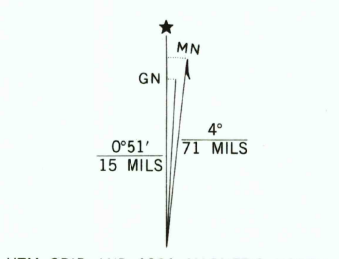
UNITED STATES
DEPARTMENT OF THE INTERIOR
GEOLOGICAL SURVEY

MONTRÖSE QUADRANGLE
ARKANSAS
7.5 MINUTE SERIES (TOPOGRAPHIC)
SW/4 LAKE VILLAGE 15' QUADRANGLE



Mapped, edited, and published by the Geological Survey

Control by USGS and NOS/NOAA
Topography by photogrammetric methods from aerial photographs taken 1975-76. Field checked 1978. Map edited 1981
Projection and 10,000-foot grid ticks: Arkansas coordinate system, south zone (Lambert conformal conic)
1000-meter Universal Transverse Mercator grid, zone 15 1927 North American Datum
To place on the predicted North American Datum 1983 move the projection lines 11 meters south and 12 meters east as shown by dashed corner ticks
Fine red dashed lines indicate selected fence and field lines where generally visible on aerial photographs. This information is unchecked



ROAD CLASSIFICATION

Primary highway, hard surface	Light-duty road, hard or improved surface
Secondary highway, hard surface	Unimproved road
Interstate Route	U. S. Route
	State Route

THIS MAP COMPLIES WITH NATIONAL MAP ACCURACY STANDARDS FOR SALE BY U. S. GEOLOGICAL SURVEY, DENVER, COLORADO 80225, OR RESTON, VIRGINIA 22092 AND ARKANSAS GEOLOGICAL COMMISSION, LITTLE ROCK, ARKANSAS 72204 A FOLDER DESCRIBING TOPOGRAPHIC MAPS AND SYMBOLS IS AVAILABLE ON REQUEST

MONTRÖSE, ARK.
SW/4 LAKE VILLAGE 15' QUADRANGLE
N3315-W9122.5/7.5

1981
DMA 7750 IV SW-SERIES V884

JAN 4 1982

2000