

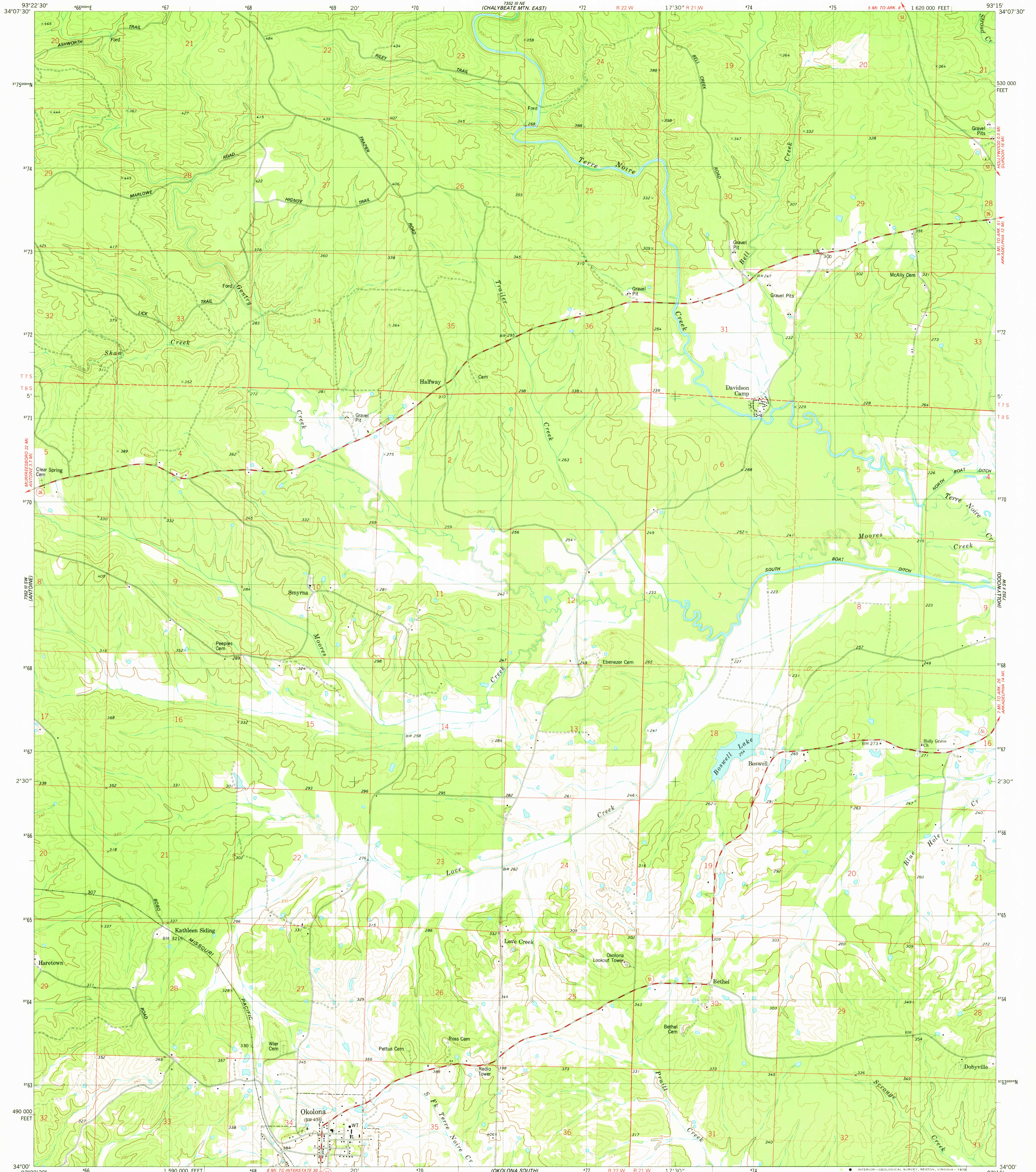
2.5 MI. TO  
CHALYBEATE  
MTN. WEST

2.5 MI. TO  
HOLLYWOOD  
DE GRAB

UNITED STATES  
DEPARTMENT OF THE INTERIOR  
GEOLOGICAL SURVEY

STATE OF ARKANSAS  
GEOLOGICAL COMMISSION  
LITTLE ROCK

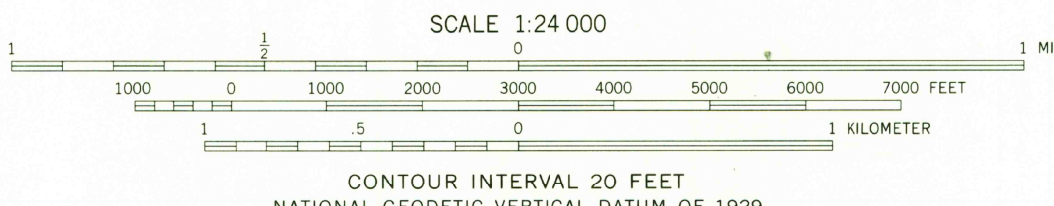
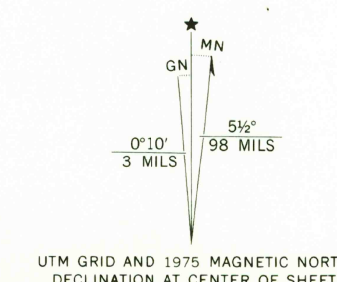
OKOLONA NORTH QUADRANGLE  
ARKANSAS—CLARK CO.  
7.5 MINUTE SERIES (TOPOGRAPHIC)  
8E/4 ANTOINE 15' QUADRANGLE



1.5 MI. TO  
PINE GROVE  
2.5 MI. NW

1.5 MI. TO  
GURDON  
2.5 MI. SW

Mapped, edited, and published by the Geological Survey  
Control by USGS and NOS/NOAA  
Topography by photogrammetric methods from aerial  
photographs taken 1974. Field checked 1975  
Projection and 10,000-foot grid ticks: Arkansas coordinate  
system, south zone (Lambert conformal conic)  
1000-meter Universal Transverse Mercator grid, zone 15  
1927 North American datum  
Fine red dashed lines indicate selected fence and field lines where  
generally visible on aerial photographs. This information is unchecked



ROAD CLASSIFICATION

Primary highway, hard surface	Light-duty road, hard or improved surface
Secondary highway, hard surface	Unimproved road
Interstate Route	U.S. Route
	State Route

THIS MAP COMPLIES WITH NATIONAL MAP ACCURACY STANDARDS  
FOR SALE BY U.S. GEOLOGICAL SURVEY, DENVER, COLORADO 80225, OR RESTON, VIRGINIA 22092  
AND ARKANSAS GEOLOGICAL COMMISSION, LITTLE ROCK, ARKANSAS 72204  
A FOLDER DESCRIBING TOPOGRAPHIC MAPS AND SYMBOLS IS AVAILABLE ON REQUEST

USGS  
Historical File  
Topographic Division

OKOLONA NORTH, ARK.  
8E/4 ANTOINE 15' QUADRANGLE  
N3400—W9315/7.5  
1975  
AMS 7352 III SE—SERIES V884

JUL 25 1978