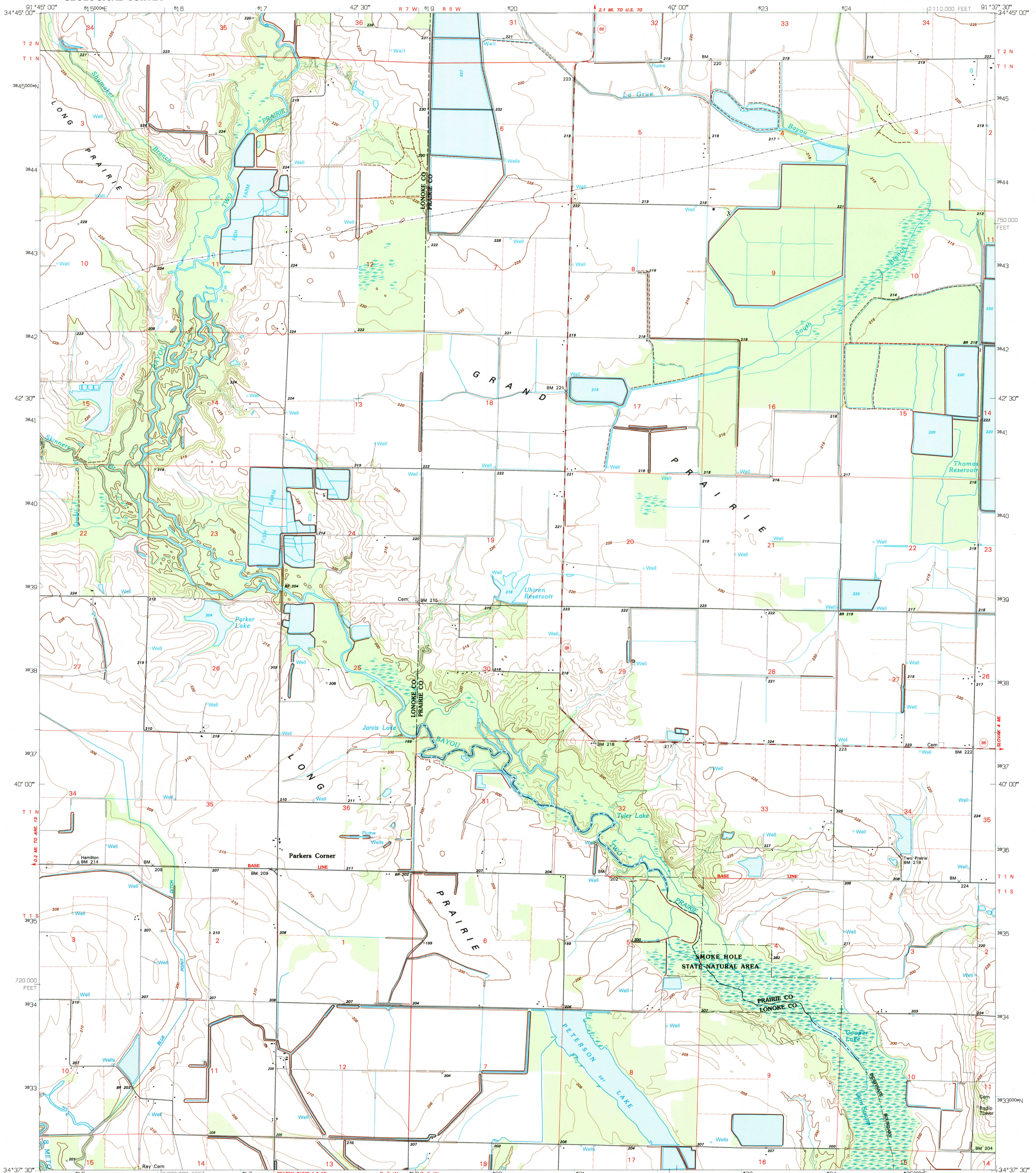
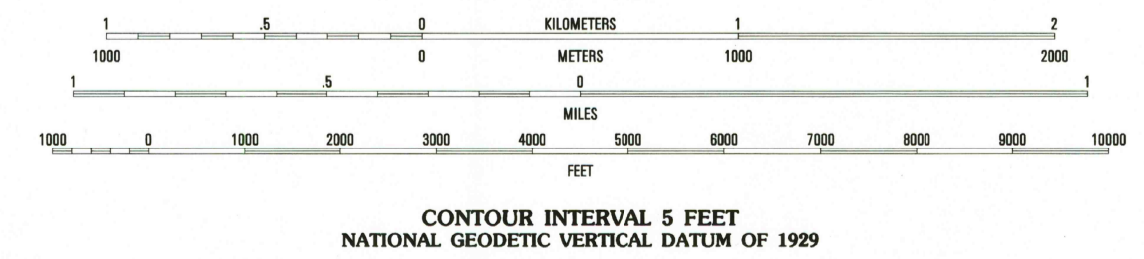
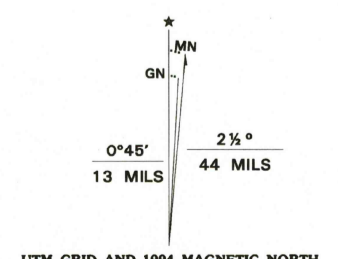


UNITED STATES
DEPARTMENT OF THE INTERIOR
GEOLOGICAL SURVEY

PARKERS CORNER QUADRANGLE
ARKANSAS
7.5 MINUTE SERIES (TOPOGRAPHIC)
NW/4 STUTTGART 15' QUADRANGLE

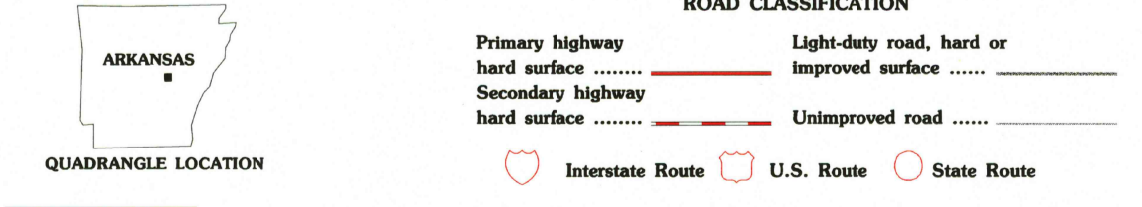


Produced by the United States Geological Survey
Control by USGS and NOS/NOAA
Topography by photogrammetric methods from aerial photographs taken 1966. Field checked 1969. Revised from aerial photographs taken 1990-91. Field checked 1993. Map edited 1994
Universal Transverse Mercator projection
10,000-foot grid ticks: Arkansas coordinate system south zone 1000-meter Universal Transverse Mercator grid ticks, zone 15, shown in blue 1927 North American Datum (NAD 27)
North American Datum of 1983 (NAD 83) is shown by dashed corner ticks. The values of the shift between NAD 27 and NAD 83 for 7.5-minute intersections are given in USGS Bulletin 1875
There may be private inholdings within the boundaries of the National or State reservations shown on this map
Fine red dashed lines indicate selected fence and field lines where generally visible on aerial photographs. This information is unchecked



SCALE 1:24000
CONTOUR INTERVAL 5 FEET
NATIONAL GEODETIC VERTICAL DATUM OF 1929

THIS MAP COMPLIES WITH NATIONAL MAP ACCURACY STANDARDS
FOR SALE BY U.S. GEOLOGICAL SURVEY DENVER, COLORADO 80225, OR RESTON, VIRGINIA 22092
AND ARKANSAS GEOLOGICAL COMMISSION, LITTLE ROCK, ARKANSAS 72204
A FOLDER DESCRIBING TOPOGRAPHIC MAPS AND SYMBOLS IS AVAILABLE ON REQUEST



QUADRANGLE LOCATION

1	2	3	1 Pocket Prairie
4	5	6	2 Carlisle
7	8	9	3 Hazen
			4 Caller
			5 Slovak
			6 Humnoke
			7 Geridge
			8 Stuttgart North

USGS 1990 HISTORICAL
MAP ARCHIVES
NOV 17 1994
REC'D FILE COPY

PARKERS CORNER, ARK.
NW/4 STUTTGART 15' QUADRANGLE
34091-F6-TF-024
1994
DMA 7653 II NW-SERIES V884