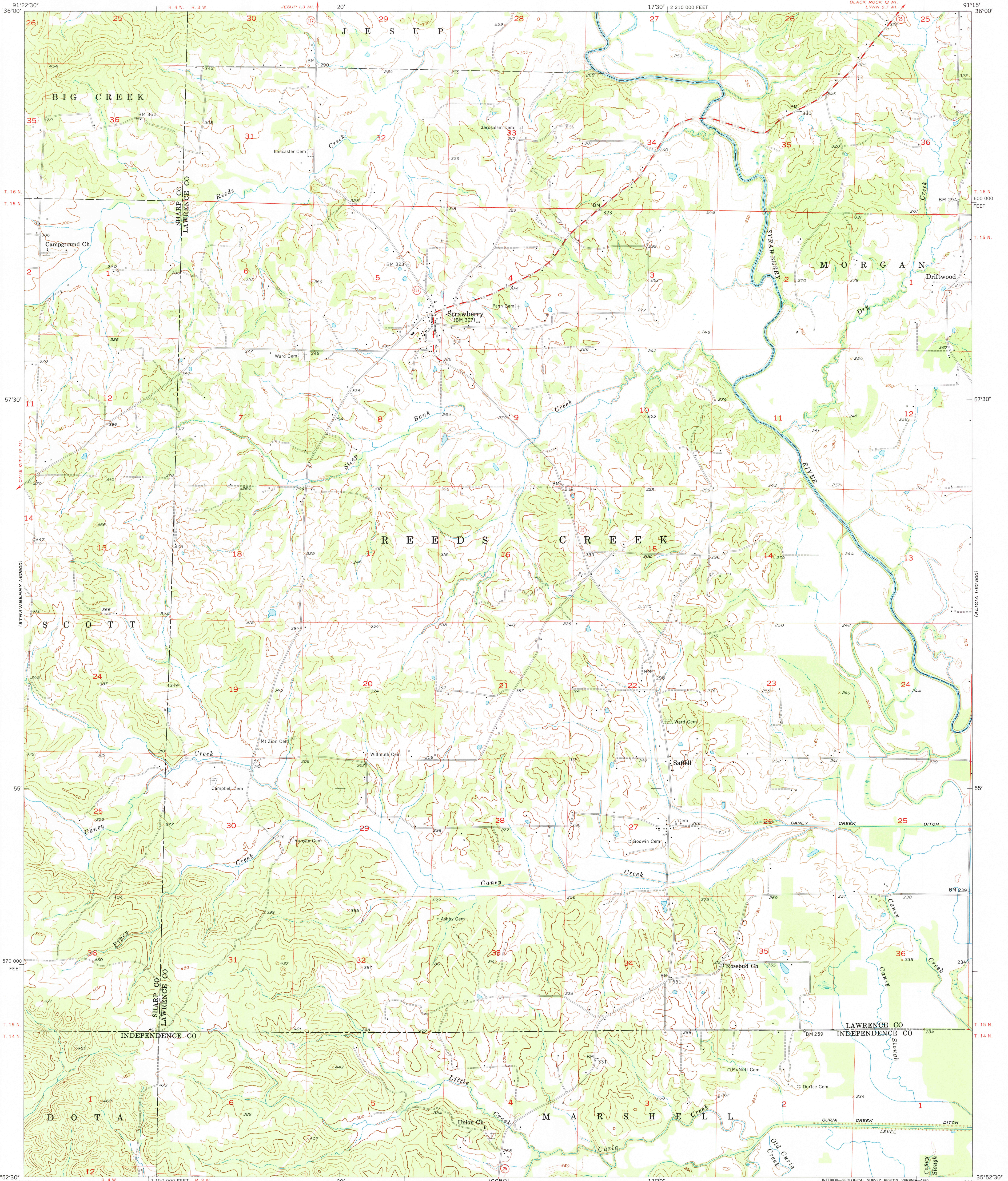
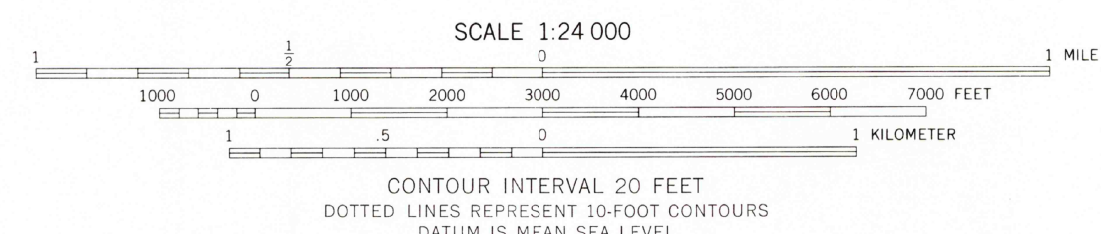


POW-HAT AN 1:62,500



Mapped, edited, and published by the Geological Survey
Control by USGS and USC&GS
Topography from aerial photographs by Kelsh plotter and by planetable surveys 1955. Aerial photographs taken 1952
Polyconic projection. 1927 North American datum
10,000-foot grid based on Arkansas coordinate system, north zone
Map photoinspected 1980
No major culture or drainage changes observed

TRUE NORTH
MAGNETIC NORTH
APPROXIMATE MEAN DECLINATION, 1955



ROAD CLASSIFICATION
Heavy-duty ——— Light-duty ———
Medium-duty ——— Unimproved dirt ———
U.S. Route (circle with number) State Route (circle with number)



THIS MAP COMPLIES WITH NATIONAL MAP ACCURACY STANDARDS
FOR SALE BY U.S. GEOLOGICAL SURVEY, DENVER, COLORADO 80225, OR RESTON, VIRGINIA 22092
AND ARKANSAS GEOLOGICAL COMMISSION, LITTLE ROCK, ARKANSAS 72204
A FOLDER DESCRIBING TOPOGRAPHIC MAPS AND SYMBOLS IS AVAILABLE ON REQUEST

USGS NMD HISTORICAL MAP
MAY 10 1991
REC'D FILE COPY

STRAWBERRY, ARK.
NE/4 STRAWBERRY 15' QUADRANGLE
N3552.5-W9115/7.5
1955
PHOTOINSPECTED 1980

ALICIA 1:62,500