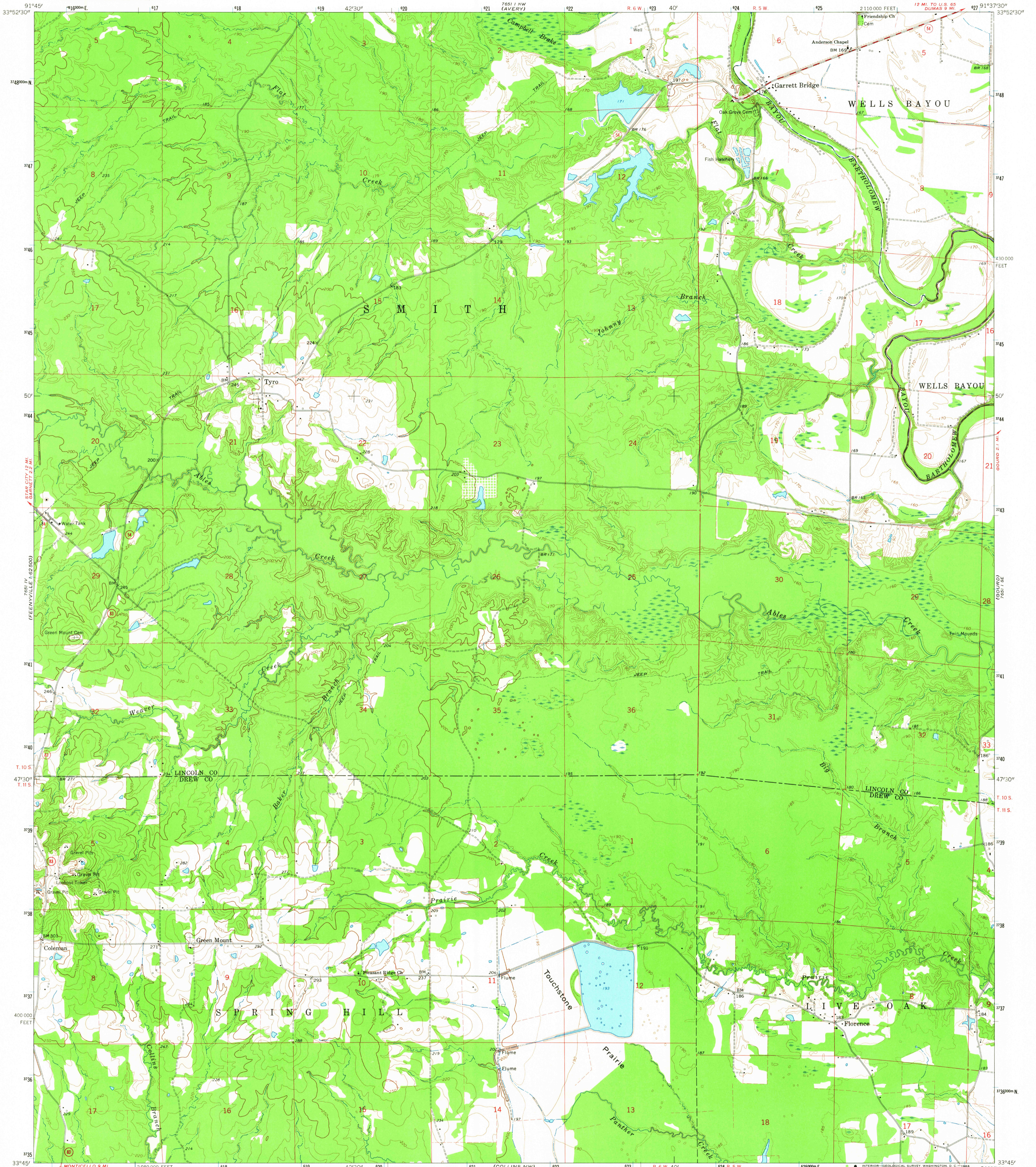


FEENYVILLE 1:62,500

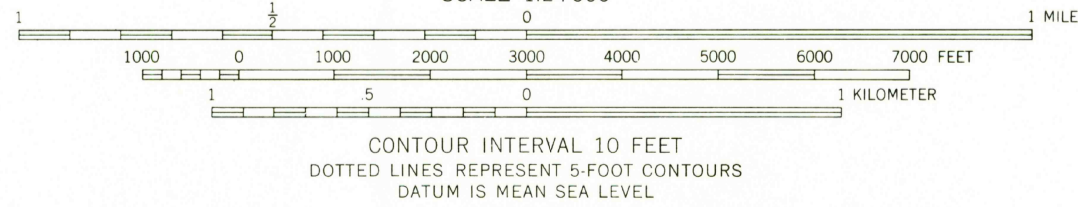
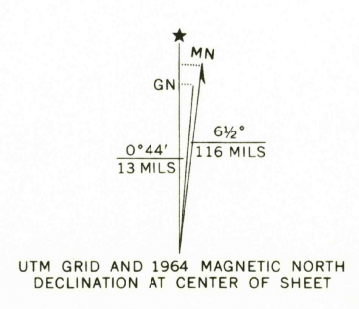
SELMA 1:62,500

UNITED STATES
DEPARTMENT OF THE INTERIOR
GEOLOGICAL SURVEY

TYRO QUADRANGLE
ARKANSAS
7.5 MINUTE SERIES (TOPOGRAPHIC)
SW 1/4 ROTAN 15' QUADRANGLE
12 MI. TO U.S. 69
DUMAS 9 MI.



Mapped, edited, and published by the Geological Survey
Control by USGS and USC&GS
Topography by photogrammetric methods from aerial
photographs taken 1962. Field checked 1964
Polyconic projection. 1927 North American datum
10,000-foot grid based on Arkansas coordinate system, south zone
1000-meter Universal Transverse Mercator grid ticks,
zone 15, shown in blue
Fine red dashed lines indicate selected fence and field lines where
generally visible on aerial photographs. This information is unchecked



USGS
Historical File
Topographic Division

ROAD CLASSIFICATION
Medium-duty ——— Light-duty ———
Unimproved dirt - - - - -
Slate Route ○



U.S.G.S.
FILE COPY
TOPOGRAPHIC DIVISION

TYRO, ARK.
SW 1/4 ROTAN 15' QUADRANGLE
N3345—W9137.5/7.5
1964

THIS MAP COMPLIES WITH NATIONAL MAP ACCURACY STANDARDS
FOR SALE BY U.S. GEOLOGICAL SURVEY, DENVER, COLORADO 80225 OR WASHINGTON, D. C. 20242
AND BY THE ARKANSAS GEOLOGICAL COMMISSION, LITTLE ROCK, ARKANSAS
A FOLDER DESCRIBING TOPOGRAPHIC MAPS AND SYMBOLS IS AVAILABLE ON REQUEST

AMS 7651 I SW—SERIES V884

2285
MAR 1 1966