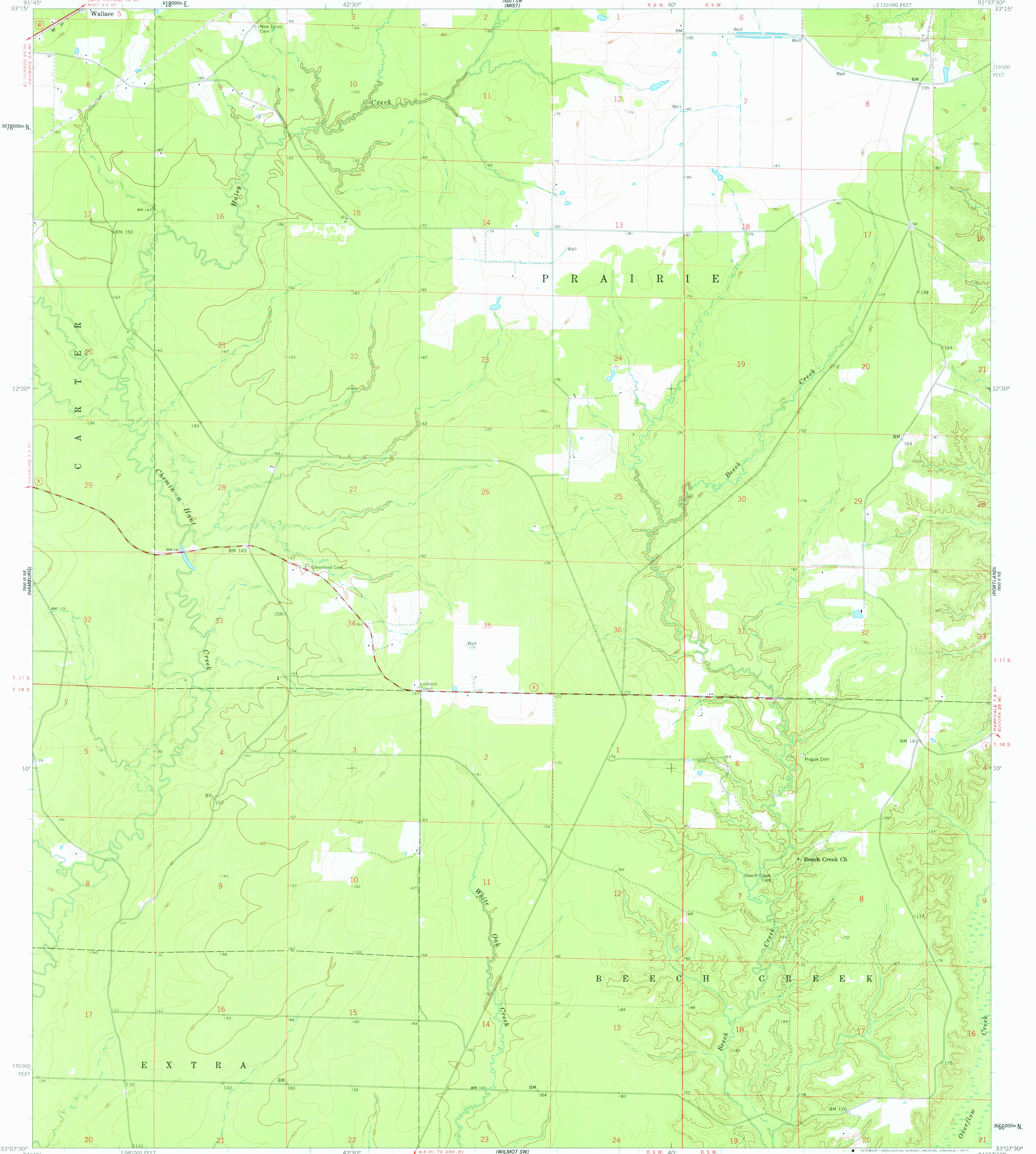


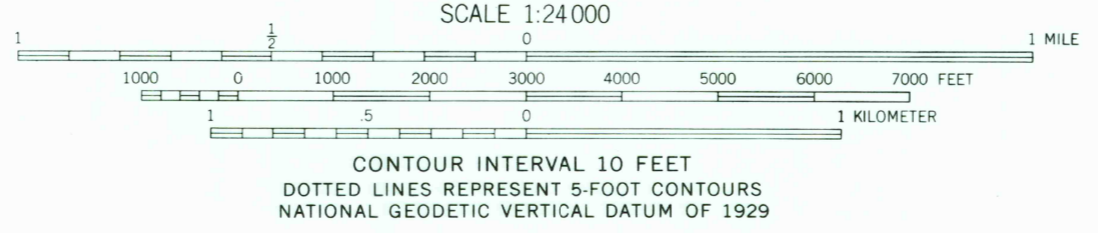
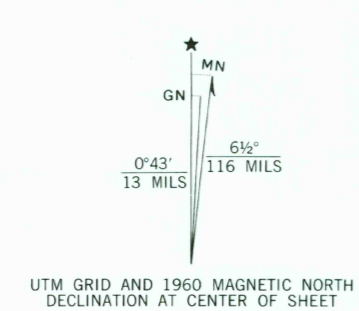
1997-1998
FOUR-STATE
MIST 3.4 MI.
LAKE VILLAGE 28 MI.
EL DORADO 89 MI.
HARRISBURG 3.4 MI.
7880 IN NE
(HARRISBURG)
7880 IN SE
(PORTLAND)
7880 IN SW
(WILMOT)
7880 IN NW
(WILMOT)

UNITED STATES
DEPARTMENT OF THE INTERIOR
GEOLOGICAL SURVEY

WILMOT NW QUADRANGLE
ARKANSAS - ASHLEY CO.
7.5 MINUTE SERIES (TOPOGRAPHIC)
NW 1/4 WILMOT 15' QUADRANGLE



Mapped, edited, and published by the Geological Survey
Control by USGS and USC&GS
Topography from aerial photographs by photogrammetric methods
and by planetable surveys 1960. Aerial photographs taken 1959
Polyconic projection. 1927 North American datum
10,000-foot grid based on Arkansas coordinate system, south zone
1000-meter Universal Transverse Mercator grid ticks,
zone 15, shown in blue
Fine red dashed lines indicate selected fence and field lines where
generally visible on aerial photographs. This information is unchecked



ROAD CLASSIFICATION

Heavy-duty	Light-duty
Medium-duty	Unimproved dirt
U. S. Route	State Route

THIS MAP COMPLIES WITH NATIONAL MAP ACCURACY STANDARDS
FOR SALE BY U. S. GEOLOGICAL SURVEY, DENVER, COLORADO 80225, OR RESTON, VIRGINIA 22092
AND ARKANSAS GEOLOGICAL COMMISSION, LITTLE ROCK, ARKANSAS 72204
A FOLDER DESCRIBING TOPOGRAPHIC MAPS AND SYMBOLS IS AVAILABLE ON REQUEST

WILMOT NW, ARK.
NW 1/4 WILMOT 15' QUADRANGLE
N3307.5 - W9137.5/7.5
1960
USGS
Historical File
Topographic Division
AMS 7650 II NW - SERIES V884

1850
SEP 07 1977