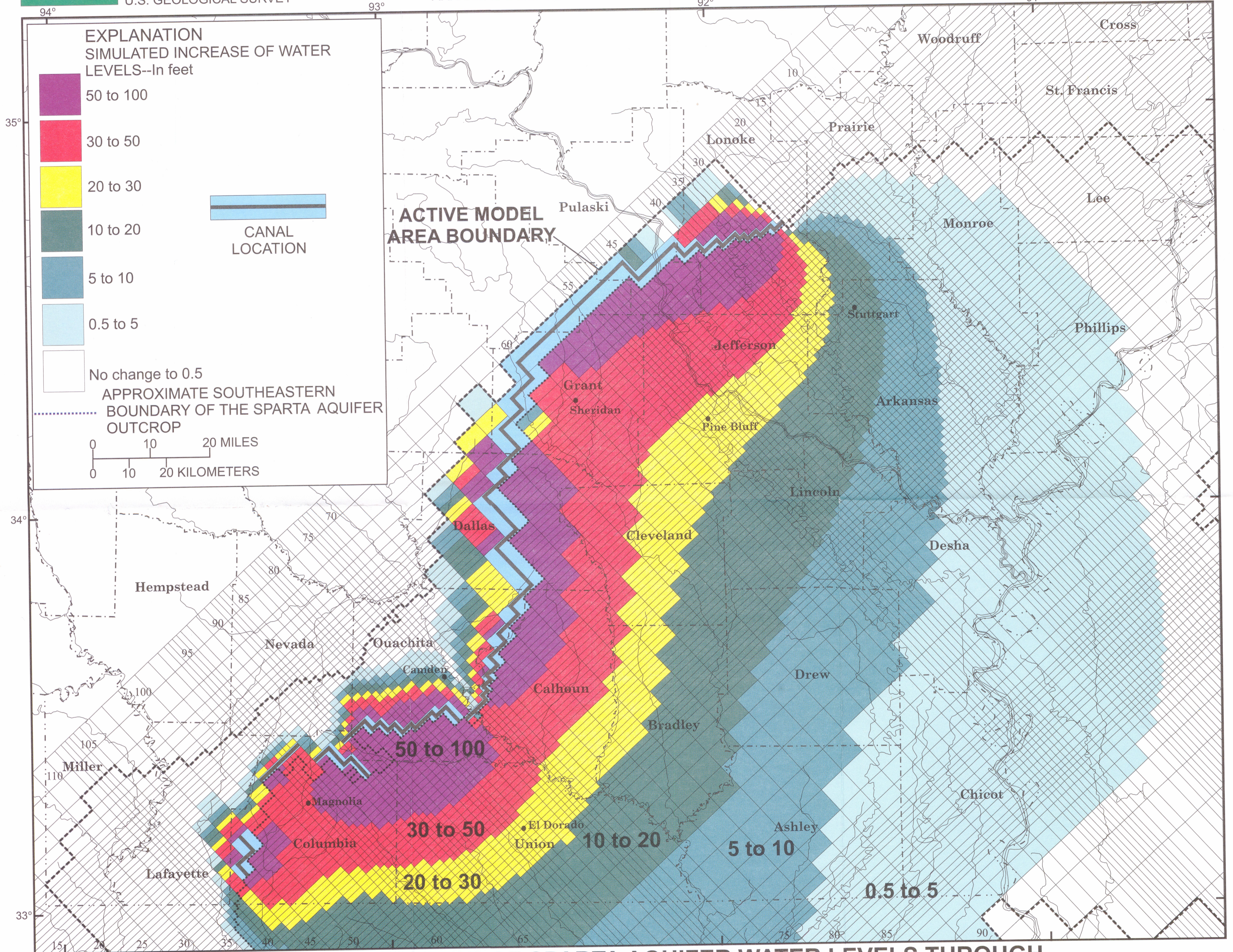


U.S. DEPARTMENT OF THE INTERIOR  
U.S. GEOLOGICAL SURVEY

Prepared in cooperation with the  
ARKANSAS SOIL AND WATER CONSERVATION COMMISSION

WATER-RESOURCES INVESTIGATIONS REPORT 01-4039  
Simulated increase of Sparta aquifer water levels through augmentation of recharge  
by infiltration canals in the outcrop area--PLATE 2  
Hays, Phillip D., 2001, Simulated response of the Sparta aquifer to outcrop area recharge  
augmentation, southeastern Arkansas



**SIMULATED INCREASE OF SPARTA AQUIFER WATER LEVELS THROUGH  
AUGMENTATION OF RECHARGE BY INFILTRATION  
CANALS IN THE OUTCROP AREA**

Phillip D. Hays  
2001