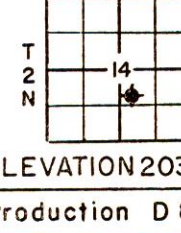
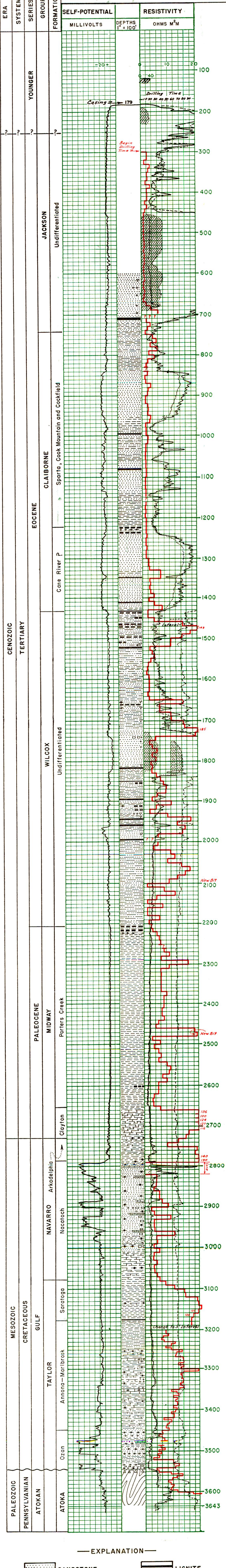


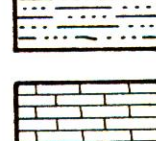
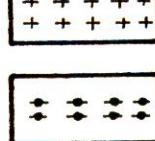
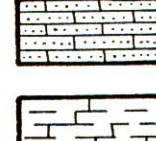
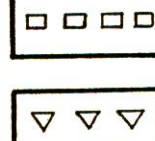




ARKANSAS RESOURCES AND DEVELOPMENT COMMISSION
 DIVISION OF GEOLOGY
 Harold B. Foxhall Director

443-447 State Capitol
 Little Rock, Arkansas
 1948

State of Arkansas	COMPANY Ronnie Smith and Cockburn Oil Company
County of Lee	LEASE L.W. Robinson
	LOCATION IN SECTION 450' Fr S & W/L NW-SE
	TOTAL DEPTH 3643 Feet
	COMMENCED May 10, 1948
ELEVATION 203 top m	COMPLETED June 14, 1948
Production D & A	ELECTRIC LOG BY SCHLUMBERGER
	GEOLOGY By C.A. Renfro
	DRAWN By Albert J. Hess



— EXPLANATION —

- | | | | |
|---|--------------------|---|--------------------|
|  | SANDSTONE |  | LIGNITE |
|  | SHALE |  | SIDERITE |
|  | SANDY SHALE |  | PYRITE |
|  | LIMESTONE OR CHALK |  | GLAUCONITE |
| | SANDY LIMESTONE | | PHOSPHATIC NODULES |
| | LIMY SHALE | | CHERT (reworked) |
| | QUARTZITE | | |