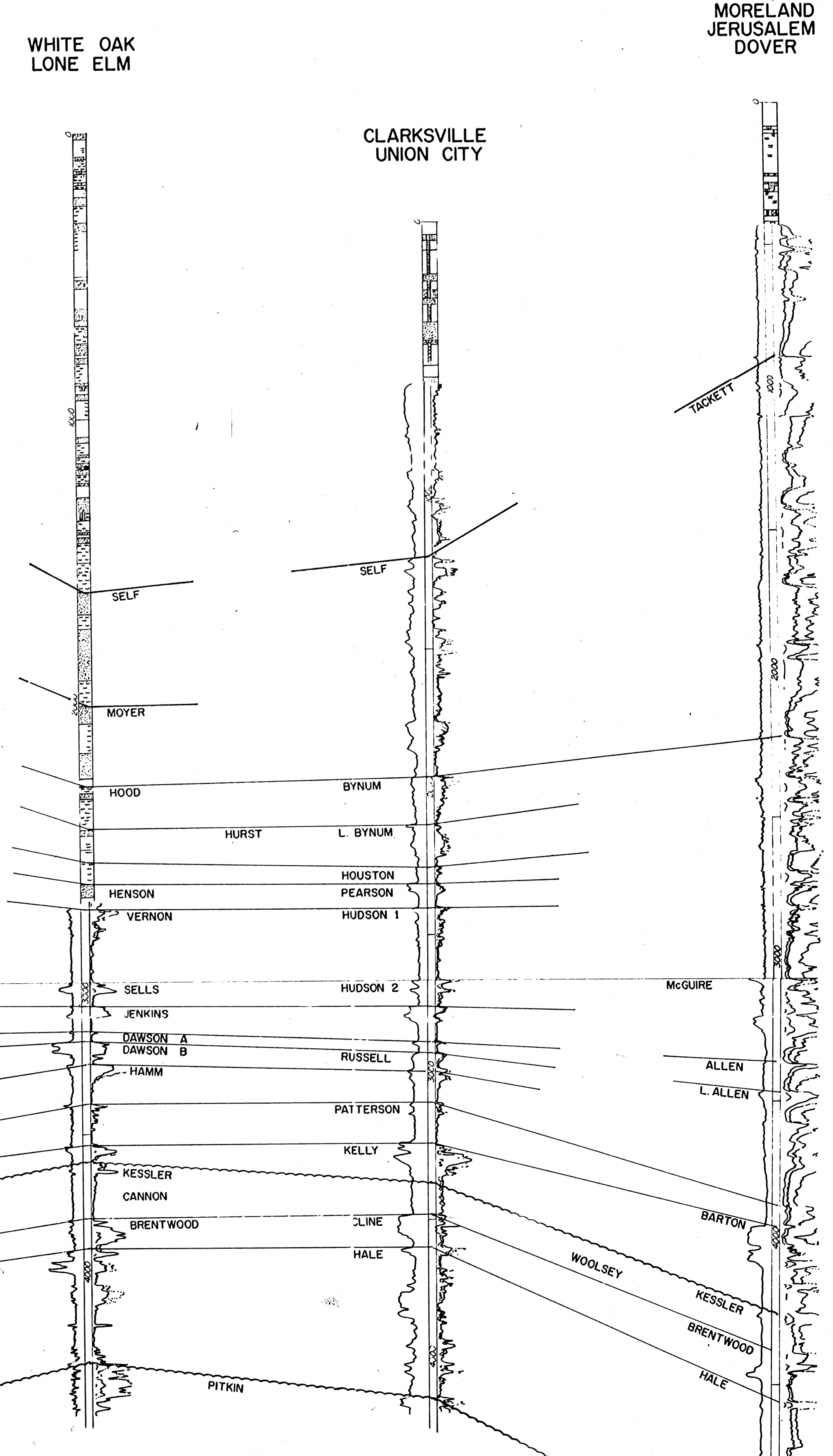
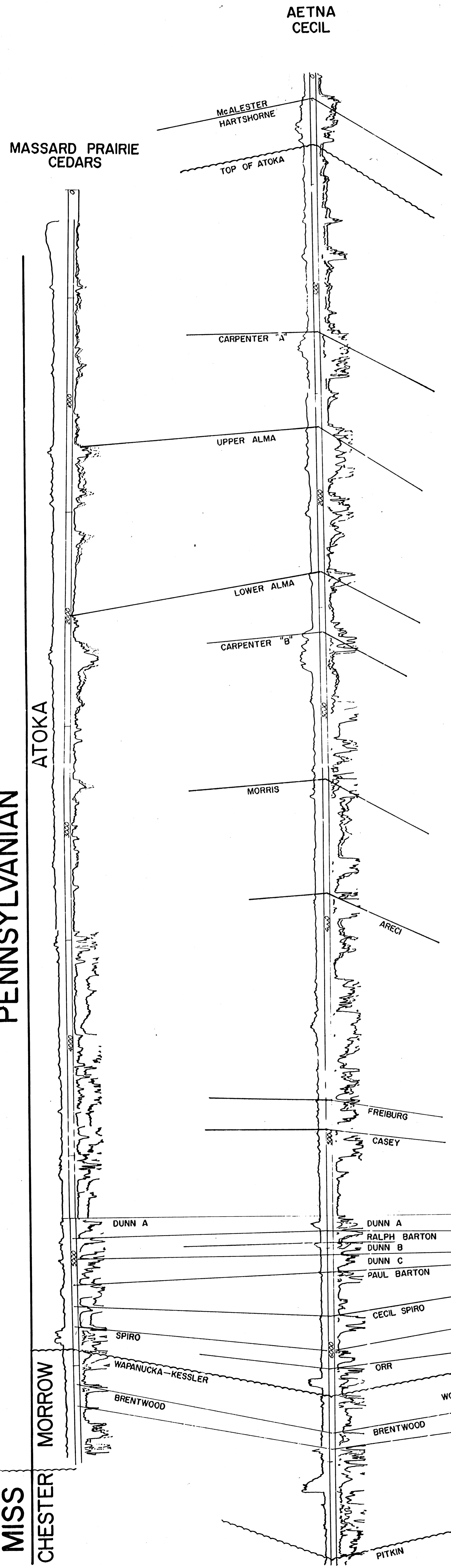
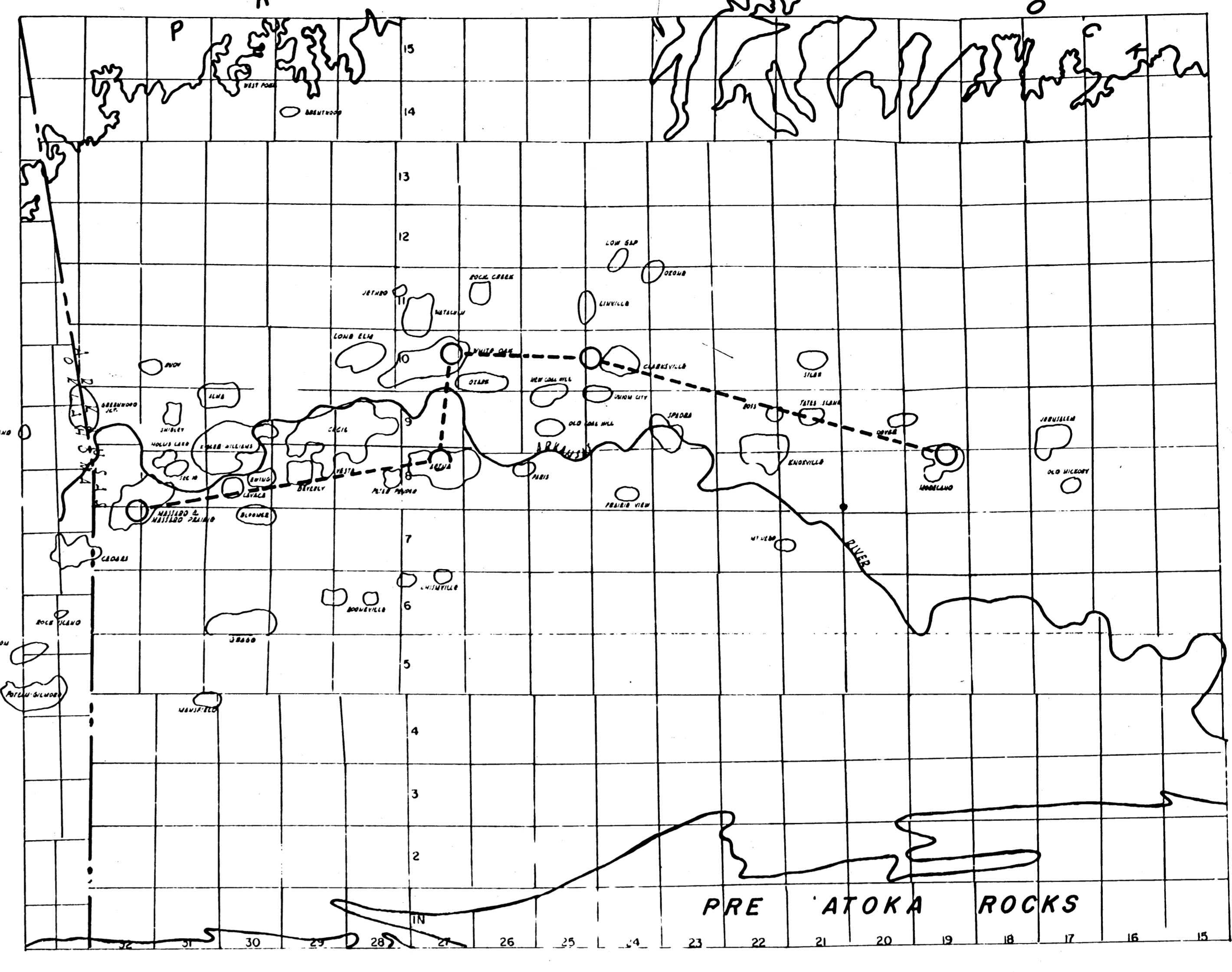


A SUBSURFACE CORRELATION OF THE GAS PRODUCING FORMATIONS OF NW ARKANSAS

PUBLISHED BY THE
FORT SMITH GEOLOGICAL SOCIETY
1960

A T O K A

New Text



THIS CORRELATION CHART REPRESENTS A PRELIMINARY ACCOUNT OF THE STRATIGRAPHY AND NOMENCLATURE OF THE PRODUCING HORIZONS IN NORTHWEST ARKANSAS. BECAUSE OF THE LENTICULARITY OF THE SANDS AND THE POOR QUALITY OF MANY OF THE AVAILABLE ELECTRIC LOGS, THESE CORRELATIONS ARE SUBJECT TO REVISION. THE CORRELATIONS ARE DEPICTED BY COMPOSITE LOGS REPRESENTATIVE OF THE AREAS NAMED. THE CHART IS PRESENTED AS AN INTERIM REPORT OF THE STRATIGRAPHIC COMMITTEE OF THE FORT SMITH GEOLOGICAL SOCIETY BY DORSEY RYAN, GEORGE DILLON, JOE CLARK, ANDY BACHO, MARLAN DOWNEY AND BILL CAPLAN.

THE ATOKA SECTION THICKENS RAPIDLY SOUTHWARD AND RELIABLE ATOKAN CORRELATIONS HAVE NOT YET BEEN EXTENDED FROM THE AREA COVERED BY THIS CHART TO MANSFIELD, GRAGG AND BOONEVILLE FIELDS; (SEE INSET) THE TOP OF THE MORROW AS DEFINED ON THE OUTCROP IS A CONGLOMERATIC ZONE A FEW FEET ABOVE THE KESSLER LIMESTONE BECAUSE THIS CONGLOMERATIC ZONE IS RARELY PRESENT IN THE SUBSURFACE, THE TOP OF THE MORROW IS PLACED COINCIDENT WITH THE TOP OF THE KESSLER FOR THE PURPOSES OF THIS CROSS SECTION.