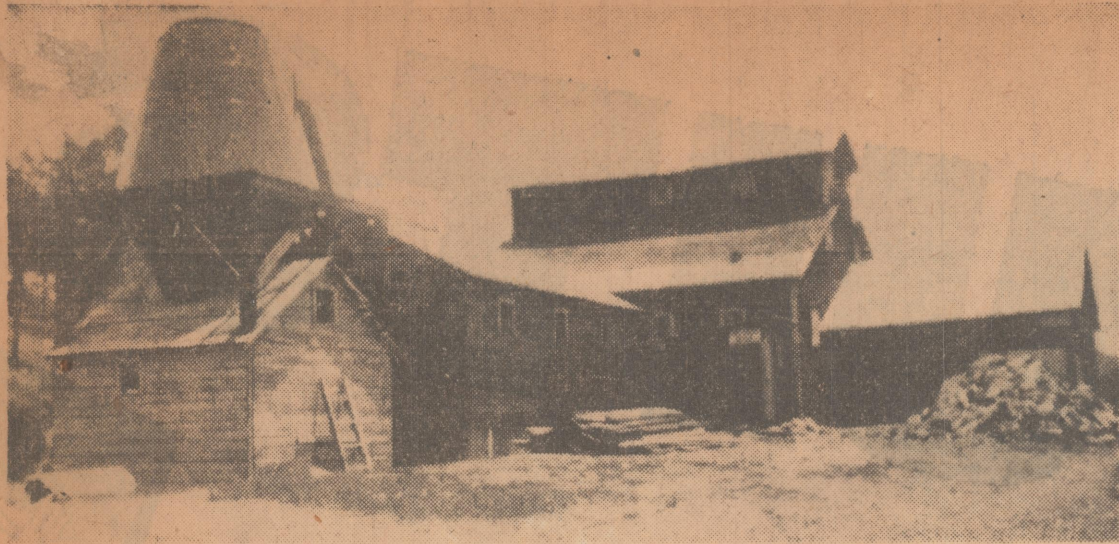


HOME OF SLATE GRANULES



A new crushing mill which will be installed soon will give the Arkansas Slate Products Company plant near Caddo Gap, above, a high speed production of slate granules. The granules, used in the manufacture of composition roofing, can be processed only from hard slate, such as found at Caddo Gap.

LARGE CRUSHER TO BE INSTALLED AT SLATE MILL NEAR CADDO GAP

1-2140

Gazette

Because a market for several carloads of slate granules daily has been indicated by the purchases of roofing companies in this trade territory, the Arkansas Slate Products Company immediately will install additional crushing equipment at its Caddo Gap plant capable of crushing approximately seven tons of slate per hour.

Full capacity of the mill will not be utilized until other sections of the plant are geared up proportionately. R. M. Traylor, vice president, said, but a five-ton-per-hour processing is planned on a 10-hour basis, or a 24-hour basis when advisable.

Mill Highly Mechanized.

Extensive use of machinery will enable the company to process the slate at a cost of approximately \$3 per ton, permitting the company to offer its product at \$6.50 per ton, f. o. b. Caddo Gap. This is in sharp contrast to the approximately \$13 per ton asked for slate granules of Pennsylvania and Minnesota, laid down in this territory, Mr. Traylor reported.

The Arkansas product is distinguished by two characteristics, its extreme hardness and its natural or inorganic coloring, Mr. Traylor said.

The hardness of the slate is essential to its use in the composition roofing industry because of its non-absorption.

Where brighter colors are required it is possible to boost or increase the natural colors to several shades brighter.

Although the slate mountain in the vicinity of Caddo Gap was the scene of mining activity a quarter-century ago, it was only about two years ago that the huge slate reserve was tapped on a commercial scale for the crushing of granules. Mr. Traylor reported that geologists had estimated that the surface reserve alone in the mine near Caddo Gap totaled millions of tons.

The hardness and inorganic coloring of the company's premium product mined near Caddo Gap gives it a distinction of its own in this section. Five shades are found in the Caddo Gap mine, each lying in a strata which can be removed separately.

The mine lies in a section which is becoming increasingly noted for its varied and multiple mining operations. Caddo Gap is served by the Missouri Pacific railroad.

Mr. Traylor reported that orders had been received in the past from various cities in this trade territory, many of which the company was unable to fill because of inadequate equipment at that time. Regular shipments of granules have been made to the Byrd Roofing Company of Shreveport for some time.

Williams to Use Product.

James M. Williams Jr., president and chairman of the board of the Williams Roofing Products Company of Kansas City and president and general manager of the Williams Roofing Company of Little Rock and Waterloo (Nevada county) whose appointment as sales executive and member of the Board of Directors of the Arkansas State Products Com-

pany, Inc., was announced this week, reported that his company will use some of the Arkansas granules at its Kansas City plant.

Other members of the Arkansas Slate Products Company official family are: H. Roddy Jones, president; Fred Donham and M. Saviak, directors, and C. P. Saviak, director and superintendent of the mill. General offices are located at 205 West Second street, Little Rock.

Polk County Slate Mining Expanded

Special to the Gazette. 5-18-41

Mena, May 17.—Mining activity in the Mena area is not confined to taking out manganese ore. A resumption this week of production at the Lehrach slate mine has resulted in cars of slate granules being loaded for delivery to roofing manufacturers at Shreveport, La. In addition E. B. Hand, Shreveport building contractor, is mining and shipping considerable slab slate, which will be used in construction work in the Louisiana city. During the week-end Mr. Hand loaded one carload of slate slabs and expects to ship several more within 10 days. This type of slate is used particularly in flagstone, walkways and drives, porch floors and other flat surfacing work on residential structures.

Slate Mill at Glenwood Will Add Machinery.

Special to the Gazette 4-19-42

Glenwood, April 18.—The Arkansas Slate Manufacturing Company of Glenwood has bought additional machinery for the slate mill here. It will double the capacity. The mill operates on a day and night shift. President C. P. Saviak has been in Missouri buying the equipment.